



A HOME FOR CELESTE HEADLEE

*The Structure of
Narrative*

Project Book

Table of Contents

Client Analysis	2
Building and Site Analysis	6
Finding a Concept	13
The Design Process	18
The Final Floorplan	27
Visualizing the Space	33
Applying the Concept	37



*Client
Analysis*

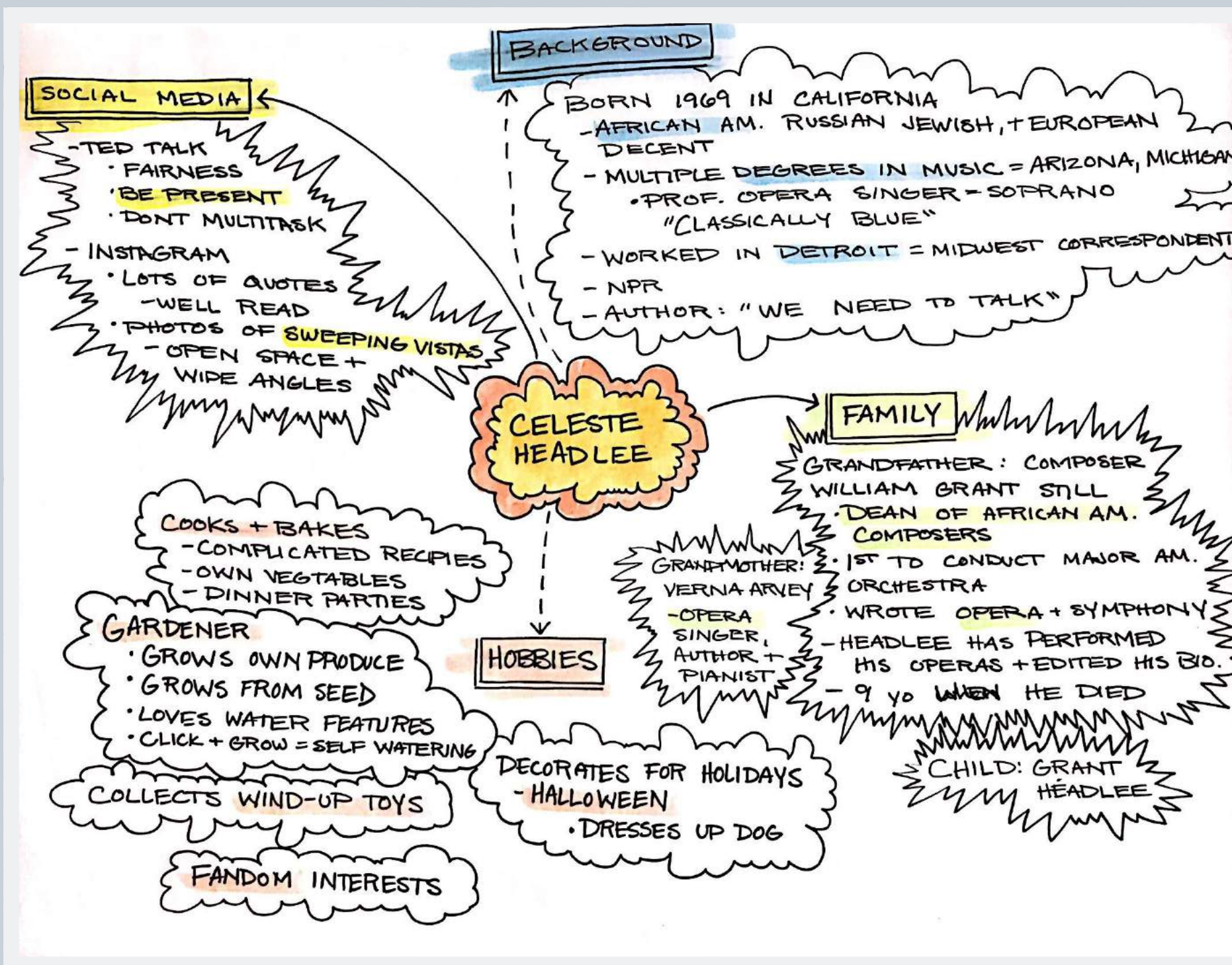


Celeste Headlee

Journalist, author, opera singer, radio host, and public speaker, in her public life Celeste Headlee is a woman who can do it all. She has spent the most recent years of her professional career teaching people how to tell their story and be heard, and to connect with the stories in other people's lives. Her TED talk on the subject of conversation has over 14,000,000 views, and her book, *We Need To Talk*, won the 2017 Silver Nautilus Award in Relationships & Communication.

Celeste is no stranger to the public eye professionally, but she works very hard to keep her private life out of the limelight. She separates herself into two categories, the performer, and the person, and she works very hard to maintain this separation. Despite this division in her life, however, it is clear that the story of Celeste's Headlee contains many different chapters and fascinating stories both already completed, and yet to be told. Her home, therefore, must be carefully designed to compliment them all.

Mind Map



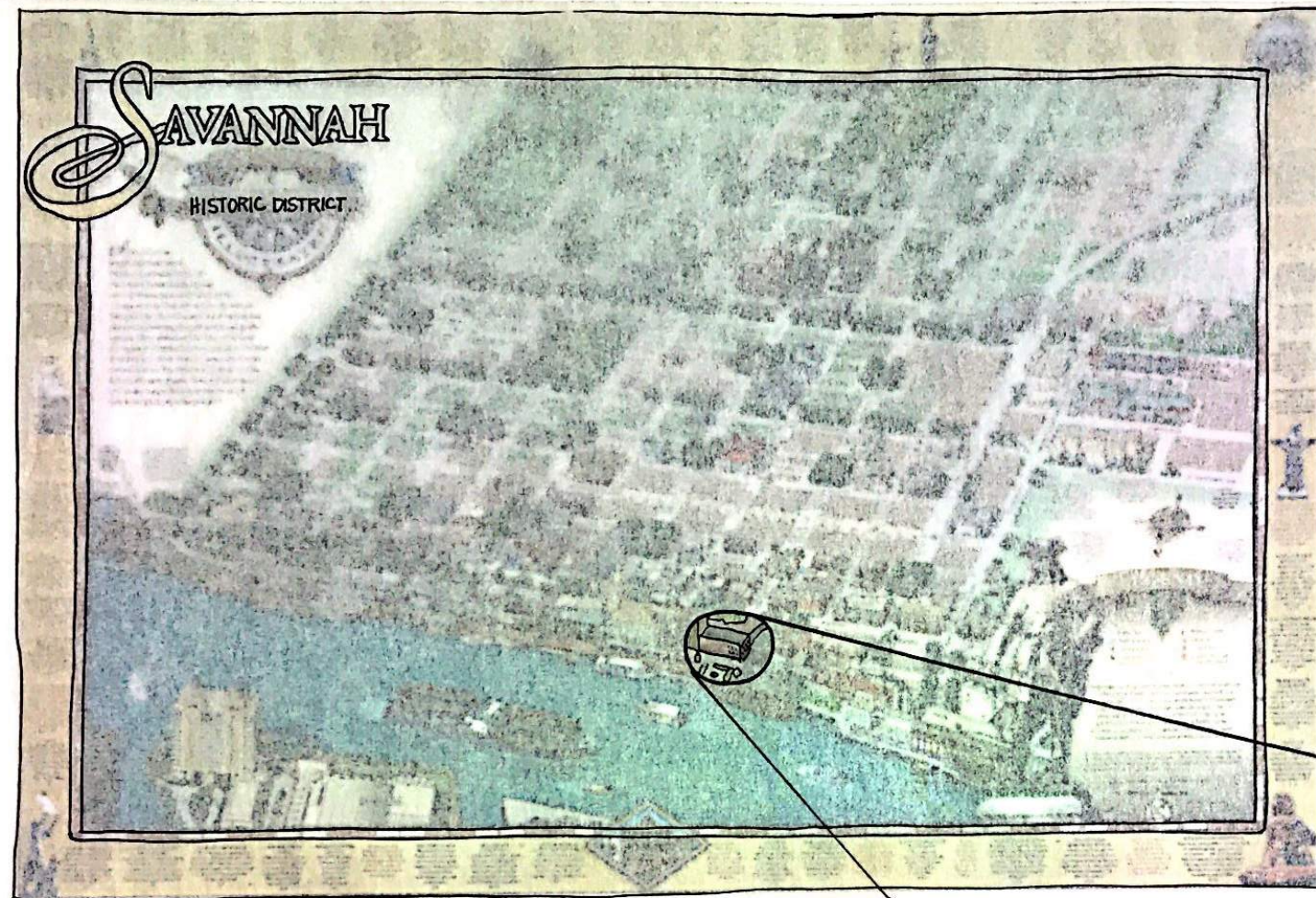
Breaking down Celeste's hobbies, family, career, and interests in an abstract mind map makes it easier to locate a design concept that will lead to the most efficient and comfortable design for the client.

Visual Mind Map



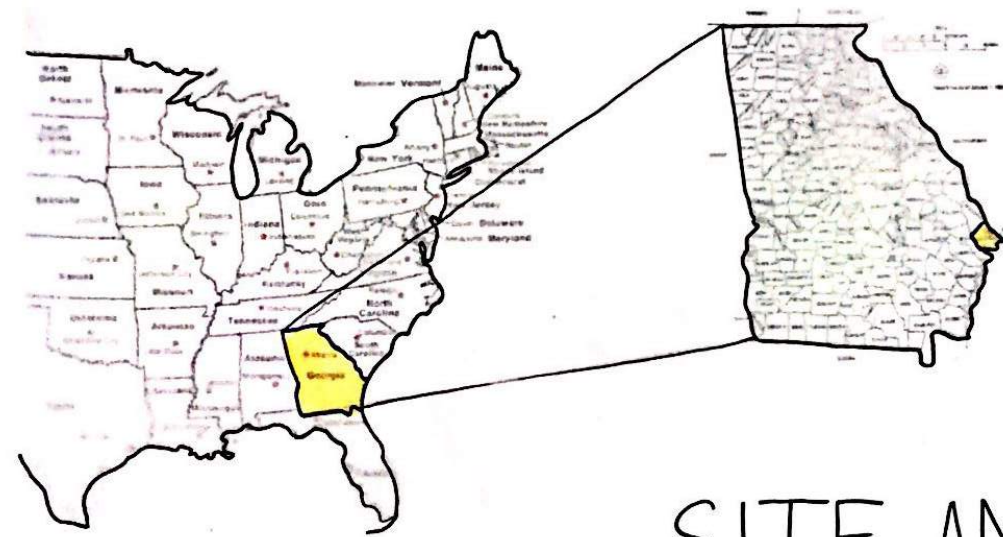


*Building + Site
Analysis*

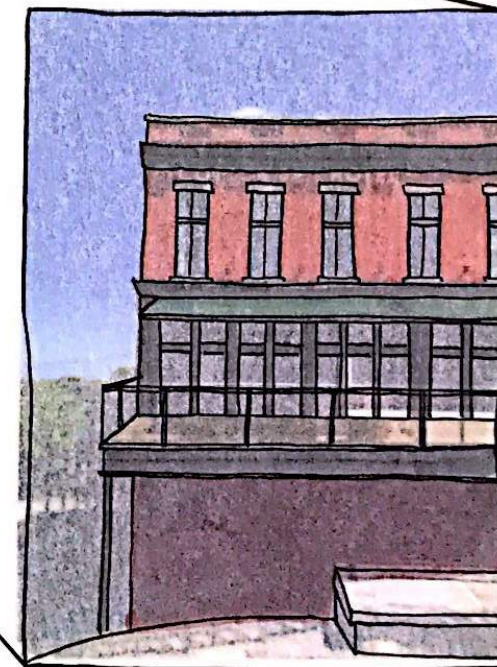


**126 W. Bay Street,
Savannah Georgia 31401**

32.0809 N, 81.0912 W



SITE ANALYSIS



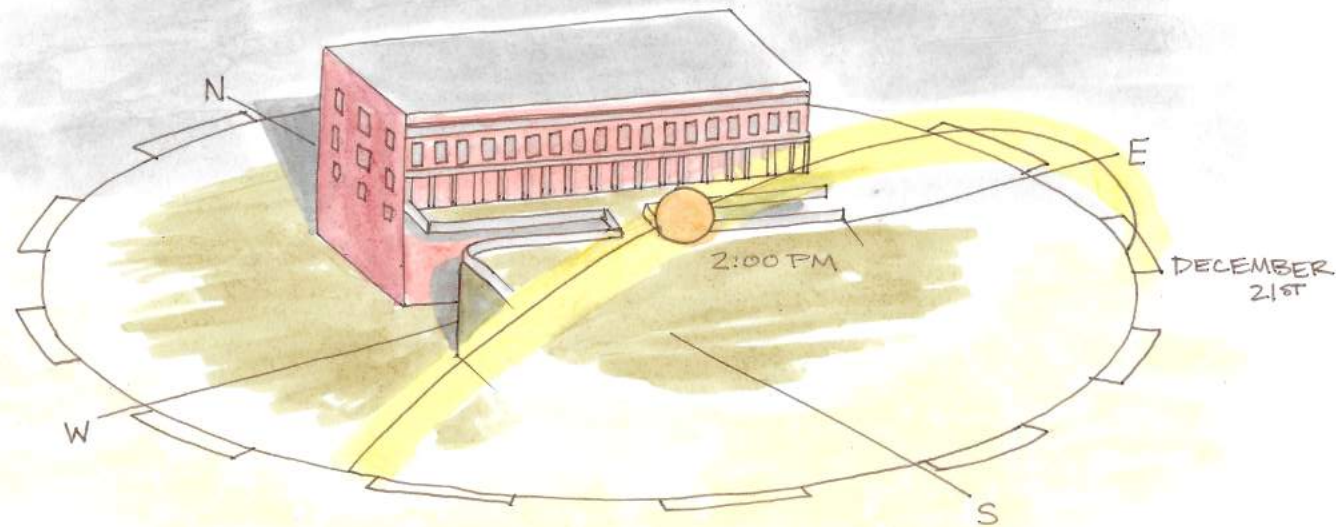
The site that was selected as Celeste's future home is a unique space. Originally a cotton warehouse, the structure now sits in Savannah's busy River Street district. The building is constructed on a diagonal, with very few 90 degree corners. As such, it presents a unique design challenge.



This view provides a closer examination of the site and the immediate surrounding area with select amenities.

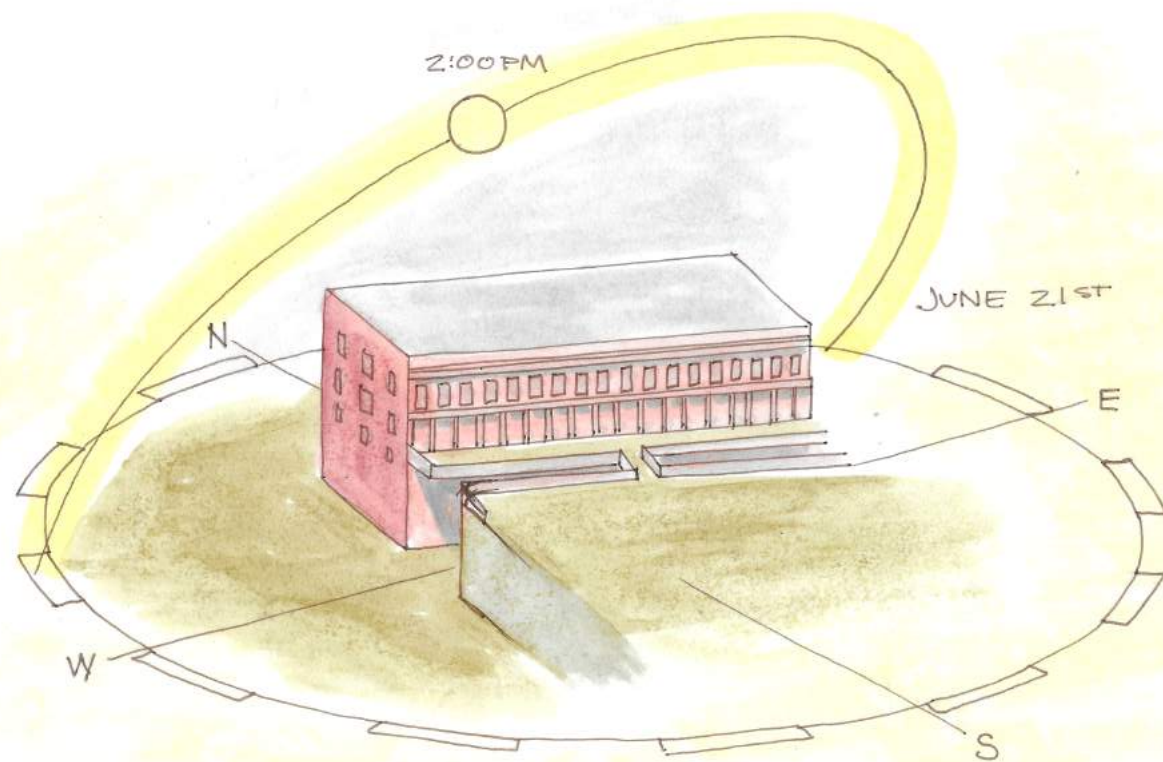
-  HOME
-  RESTAURANTS (LIMITED SELECTION OF MANY)
-  PARKING

Solar Study



WINTER SOLSTICE

AT THIS TIME OF YEAR THE SUN WILL FALL ON A DIRECT ANGLE INTO THE HOME, WHICH WILL HELP TO HEAT THE HOME

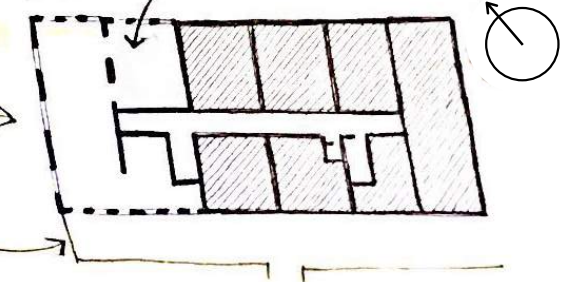


SUMMER SOLSTICE

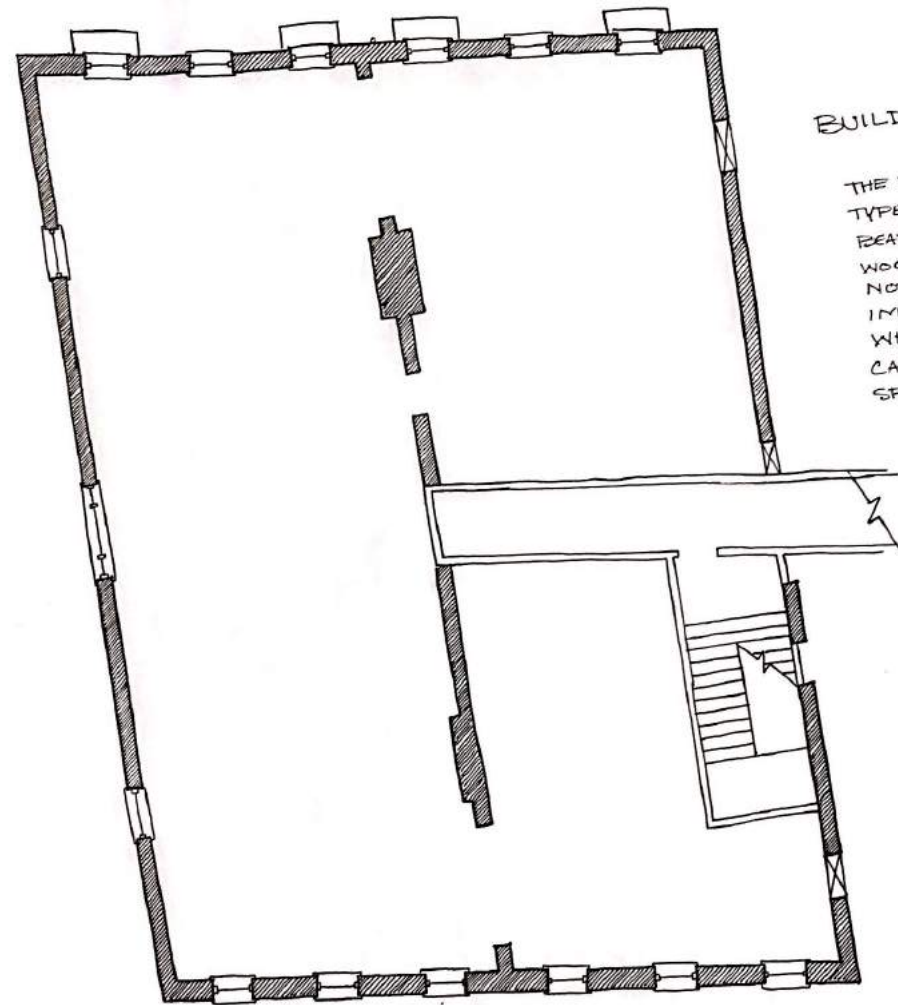
ALTHOUGH THE SUN IS FALLING AT A STEEPER ANGLE AT THIS TIME OF YEAR, PROLONGED EXPOSURE TO THE SOUTH AND WEST FACADES DURING THE DAY WILL ALLOW THE SUN TO DRASTICALLY HEAT THE HOME AND INCREASE ENERGY COSTS.

WITH BOTH SOUTH AND WEST FACING WINDOWS, THE SPACE WILL GET A GREAT DEAL OF SUNLIGHT YEAR-ROUND, ESPECIALLY IN THE AFTERNOON AND EVENING. THIS WILL CAUSE THE SPACE TO BE QUITE WARM + WILL FADE FABRICS + ARTWORK

THIS SPACE ONLY HAS NORTH FACING WINDOWS AND AS SUCH WILL RECEIVE CONSTANT, INDIRECT LIGHT AND BE QUITE COLD



Building Analysis



BUILDING STRUCTURE MAP

THE BUILDING HAS TWO DIFFERENT TYPES OF WALLS: BRICK LOAD BEARING WALLS AND LATER WOOD FRAME WALLS WHICH ARE NOT LOAD BEARING. IT IS IMPORTANT TO NOTE WHICH IS WHICH SO AS TO KNOW WHICH CAN BE CHANGED WHILE SPACE PLANNING.

▨ ORIGINAL LOAD BEARING WALLS
 # MODERN WOOD FRAME WALL



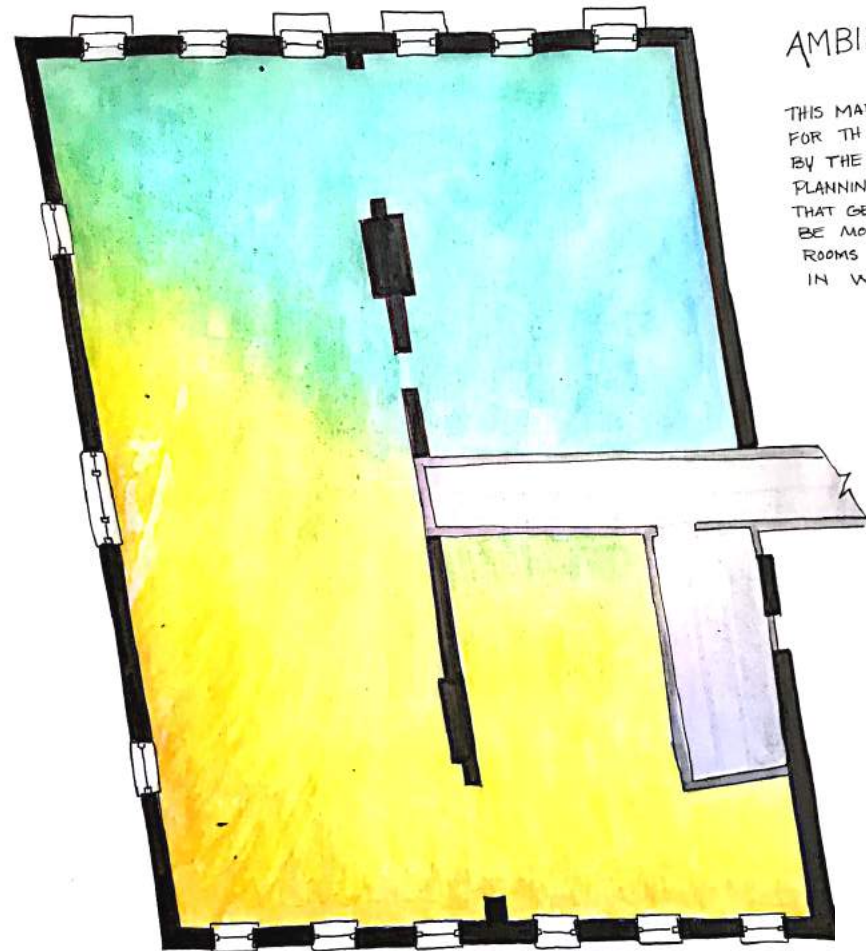
MAP OF WINDOWS AND DOORS WITH TRANSITIONAL SPACES

THIS SPACE HAS MANY EXISTING DOORWAYS THAT MAY OR MAY NOT REMAIN WHILE SITE PLANNING. HIGHLIGHTING THESE AND THE TRANSITIONAL SPACES THAT WOULD NEED TO REMAIN CLEAR TO ALLOW TRAFFIC TO MOVE THROUGH. IT WILL BE IMPORTANT TO CONSIDER THIS ADDITIONAL FOOTPRINT WHEN SPACE PLANNING. SOME OF THE WINDOWS ALSO FUNCTION AS DOORS AND WILL NEED TRANSITIONAL SPACES.

▨ TRANSITIONAL SPACE
 ■ DOOR (OR FUNCTIONS AS DOOR)
 ■ WINDOW

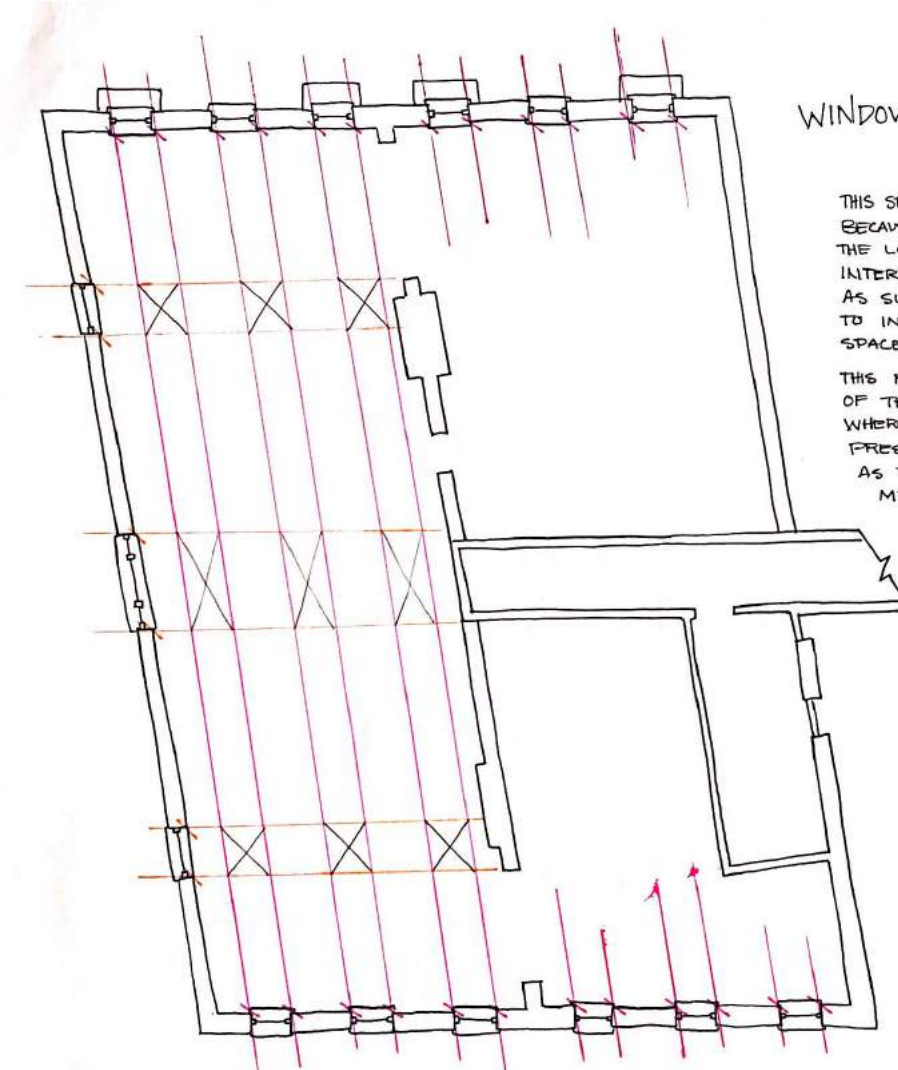


Building Analysis



AMBIENT TEMPERATURE MAP


THIS MAP SHOWS THE LIKELY AMBIENT TEMP FOR THE SPACE IF IT WERE HEATED SOLELY BY THE SUN. THIS COULD BE VALUABLE WHEN PLANNING THE LAYOUT OF THE SPACE: ROOMS THAT GENERATE HEAT LIKE A KITCHEN WOULD BE MORE COMFORTABLE IN COOLER ZONES, ROOMS WITH PLANTS WOULD BE BETTER IN WARMER AREAS.



WINDOW SIGHT LINES

THIS SPACE IS PARTICULARLY INTERESTING BECAUSE OF ALL OF THE WINDOWS. THE LOCATION HAS SOME PARTICULARLY INTERESTING VIEWS AS WELL AND AS SUCH IT WOULD BE A SHAME TO INTERRUPT THOSE VIEWS WHILE SPACE PLANNING.

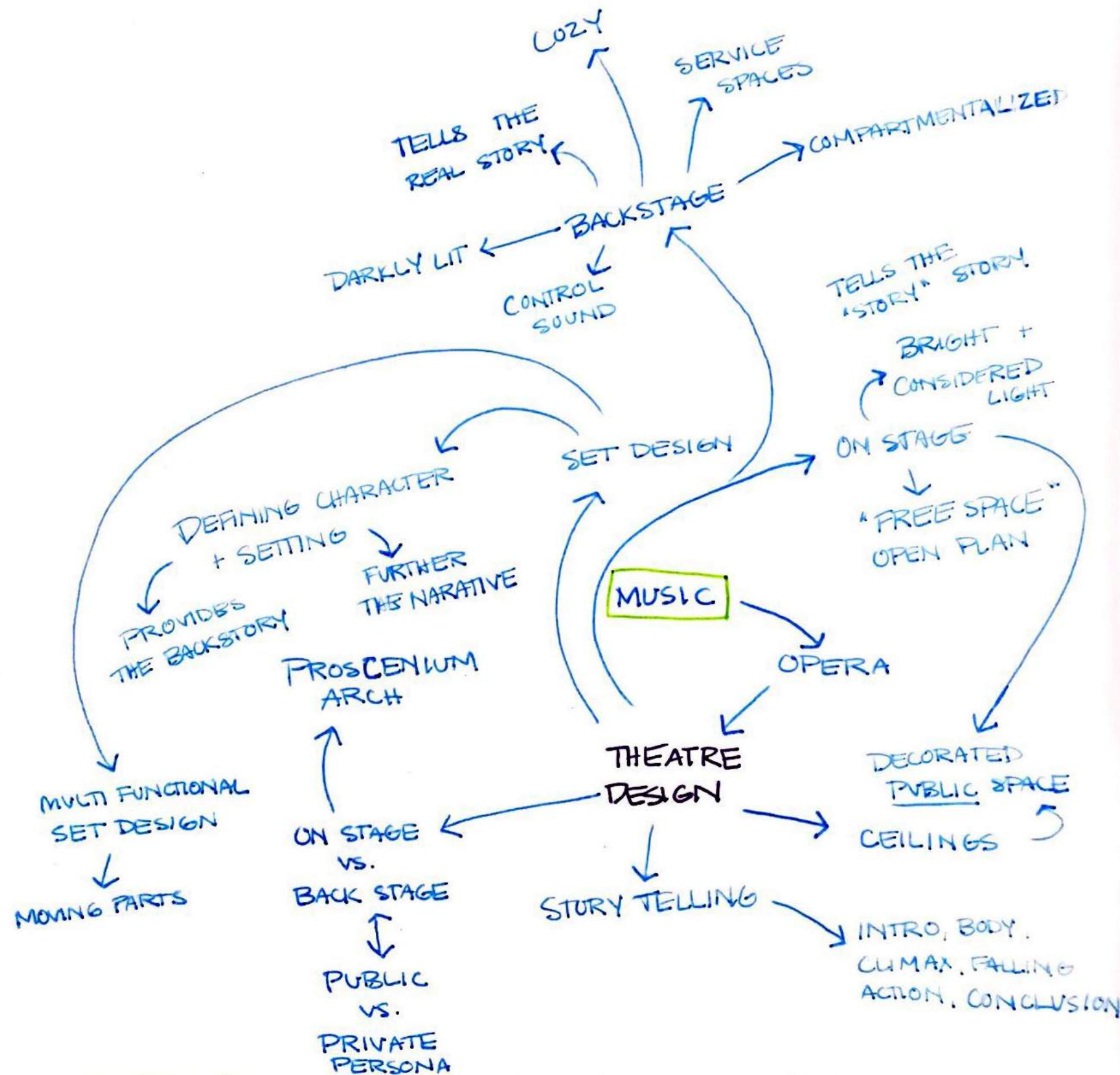
THIS MAP LAYS OUT THE SIGHT PATHS OF THOSE WINDOWS AND NOTES PLACES WHERE SIGHTLINES CROSS. I'LL WANT TO PRESERVE AS MANY OF THESE VIEWS AS POSSIBLE IN ACCORDANCE WITH MY CONCEPT.

A sepia-toned photograph of a church interior, likely a sanctuary or choir loft. The scene is viewed from a stage area. In the foreground, a double bass is on the left, and a drum set is in the center. The background features a large, ornate altar with a dome and the Latin inscription "LAUDATE DOMINUM". The text "Finding a Concept" is overlaid in a white, cursive font across the center of the image.

*Finding a
Concept*

Refining a Concept

Once a concept was selected, further research and mind mapping were created to better understand how that concept could be applied to the built environment.

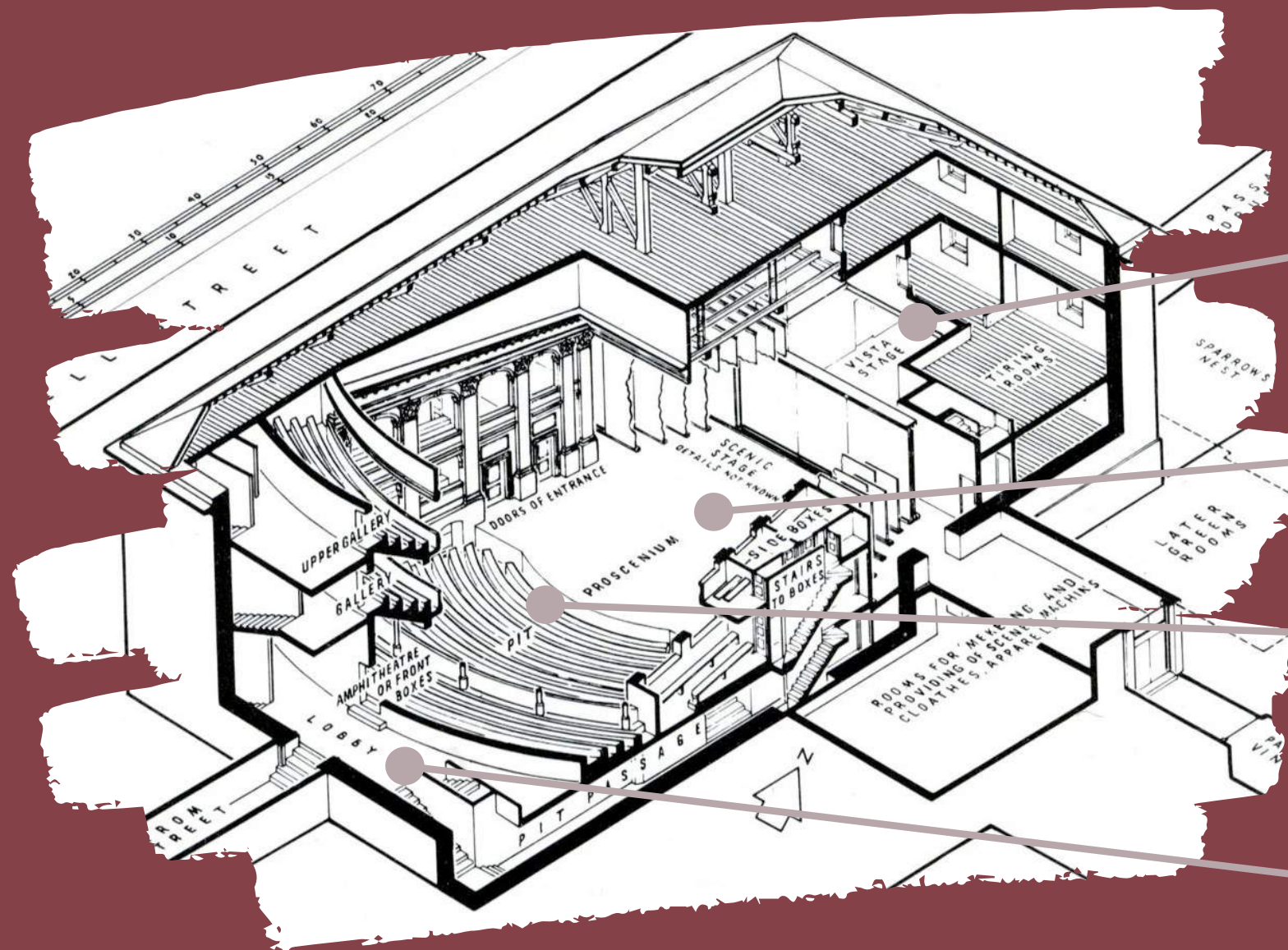


The Structure of Narrative

A home is like a theater. In a theater, the environment is carefully considered and tailored to further the narrative. The entire structure is designed to facilitate the telling of stories on a grander scale: to elevate the moments that happen inside to high art. Likewise, the best interiors are carefully curated to tell the story of the person who lives there. Our homes become eclectic collections of bits and pieces of our identity, family, heritage, education, interests, and beliefs. In this way they act as a carefully designed stage set: populated with characters, rich in backstory, and filled with fascinating everyday narratives. The best design for a home, therefore, is the one that lays the foundation for the most interesting story.

Mapping the Concept

If the home is a theater, then each room in the home should have a theater-space counterpart...



Backstage is where you would find comparisons to spaces like the bedrooms and other such private rooms. These are spaces that very few people would ever see.

The kitchen is like the stage. Although clearly a public space visually, access is restricted to those with specific tasks to complete. All others must remain outside the proscenium arch.

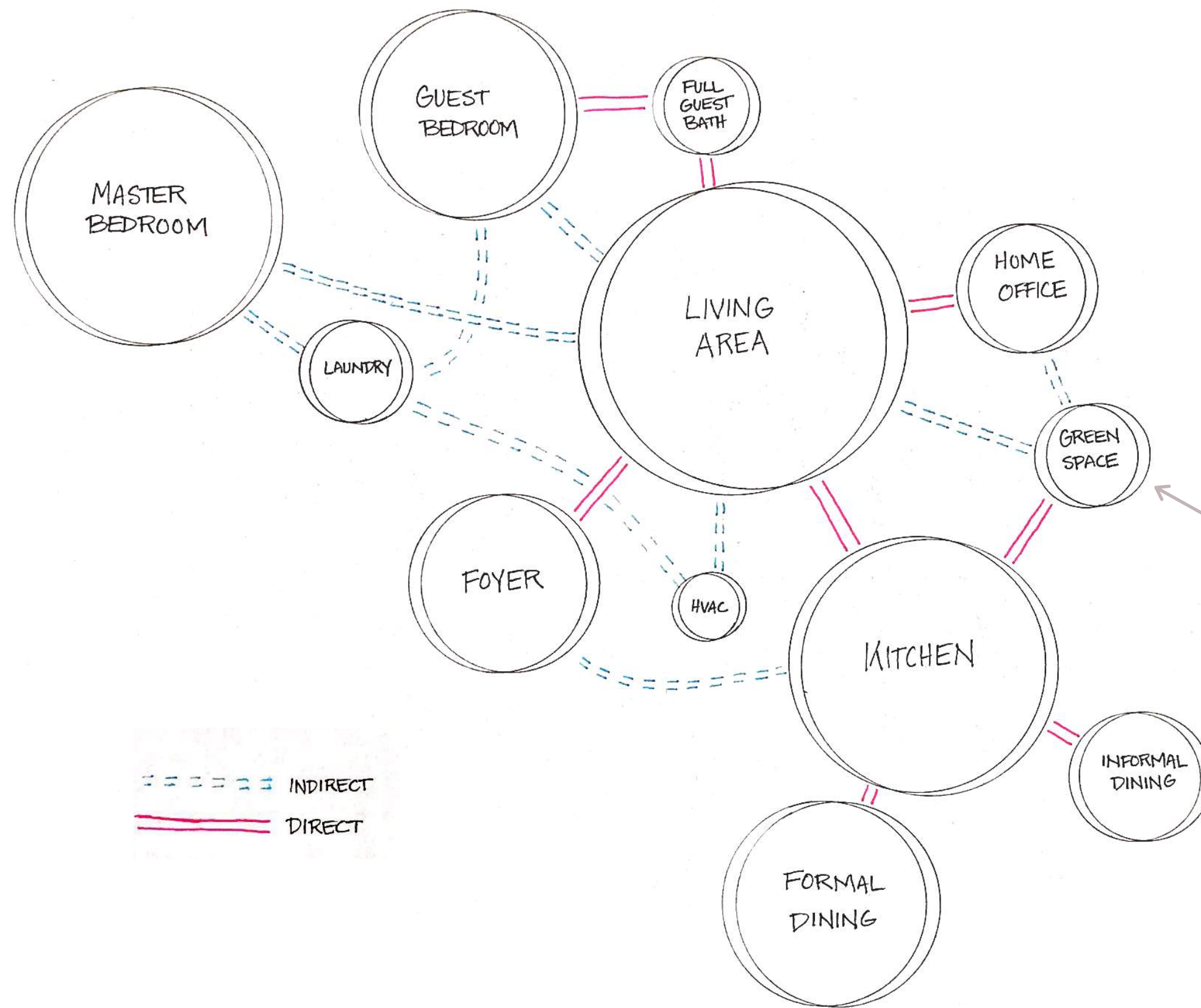
The living room is like the theater seating. This is where guests will spend most of their time, it is likely the space they will remember as well.

The foyer is like the Lobby, its the first space the guests interact with and it sets the mood.



*The Design
Process*

Adjacency Diagram

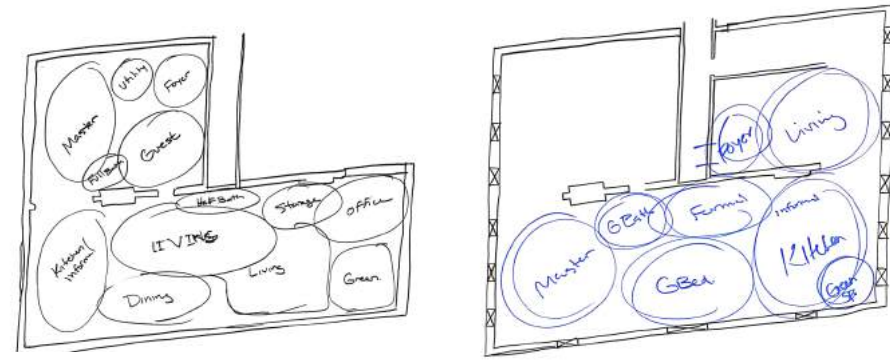


This plan features a Green Space along with the traditional spaces one would find in a home. This was specially selected for Celeste to provide her with pseudo-access to the outdoors. Celeste loves to garden and grow her own food, but the chosen site lacks any real green space. Although it has four small balconies, these features do not provide enough space to cultivate produce. To combat this issue, an indoor greenhouse space will be included in the design of the home, complete with grow lights to simplify the growing process.

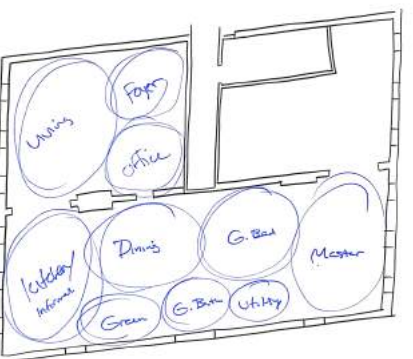
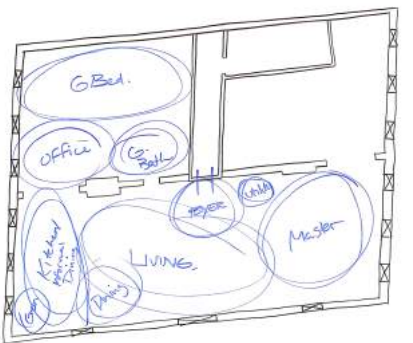
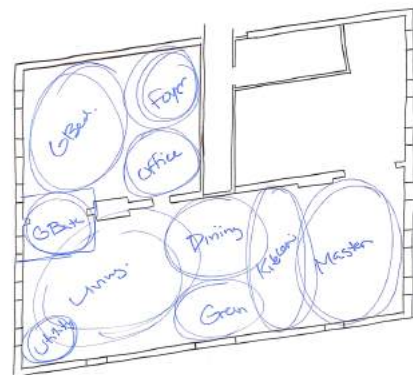
Bubble Diagrams

Bubble Diagrams

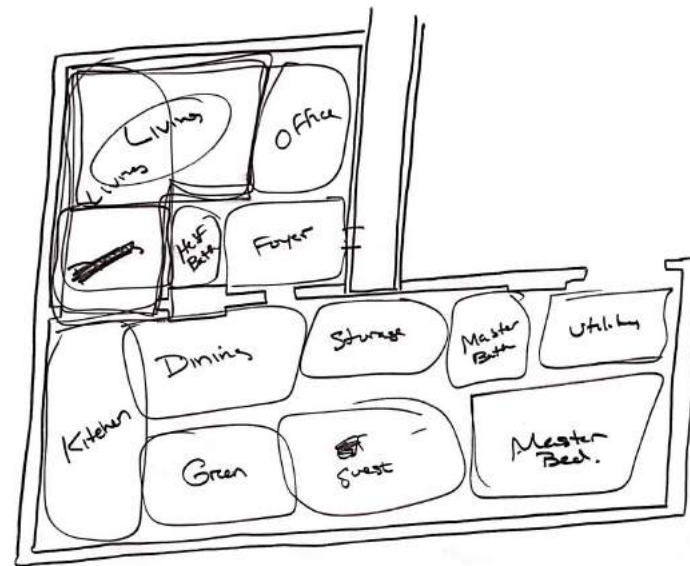
A series of bubble diagrams were completed very quickly to map out potential floor plans. Of the ten options, three were selected to move forward in the design process.



Plan 1



Plan 2



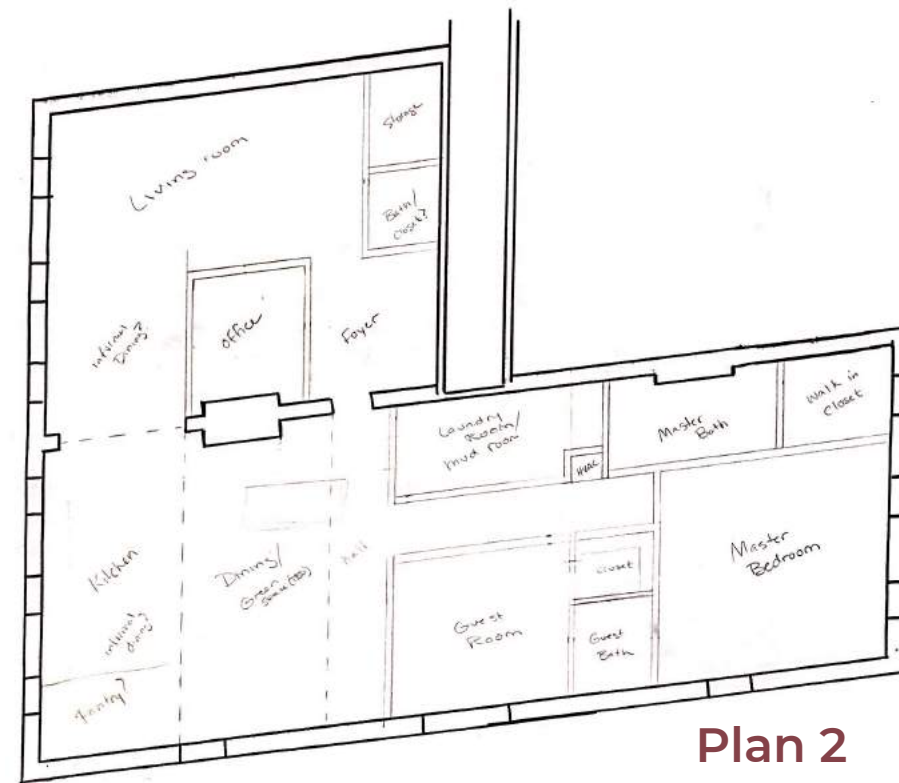
Plan 3



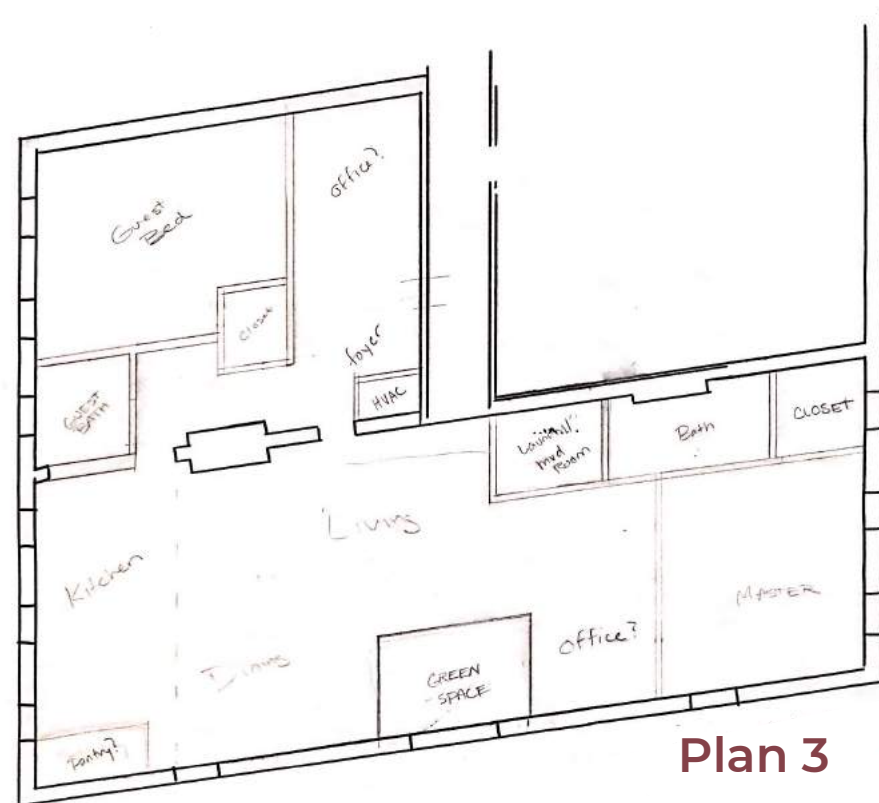
Block Diagrams



Plan 1



Plan 2



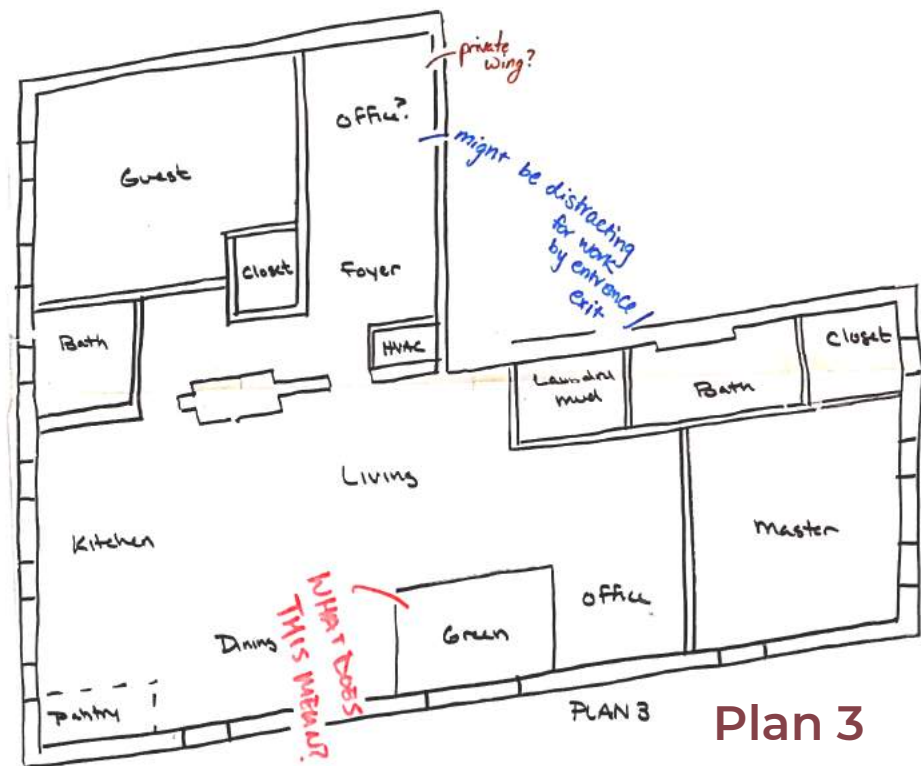
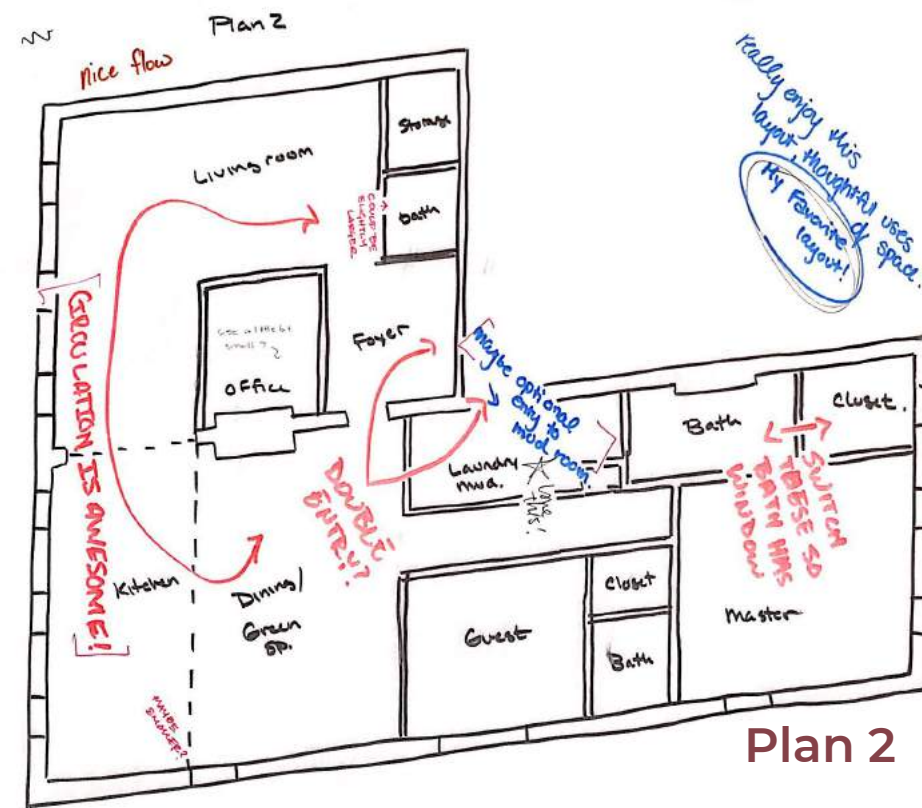
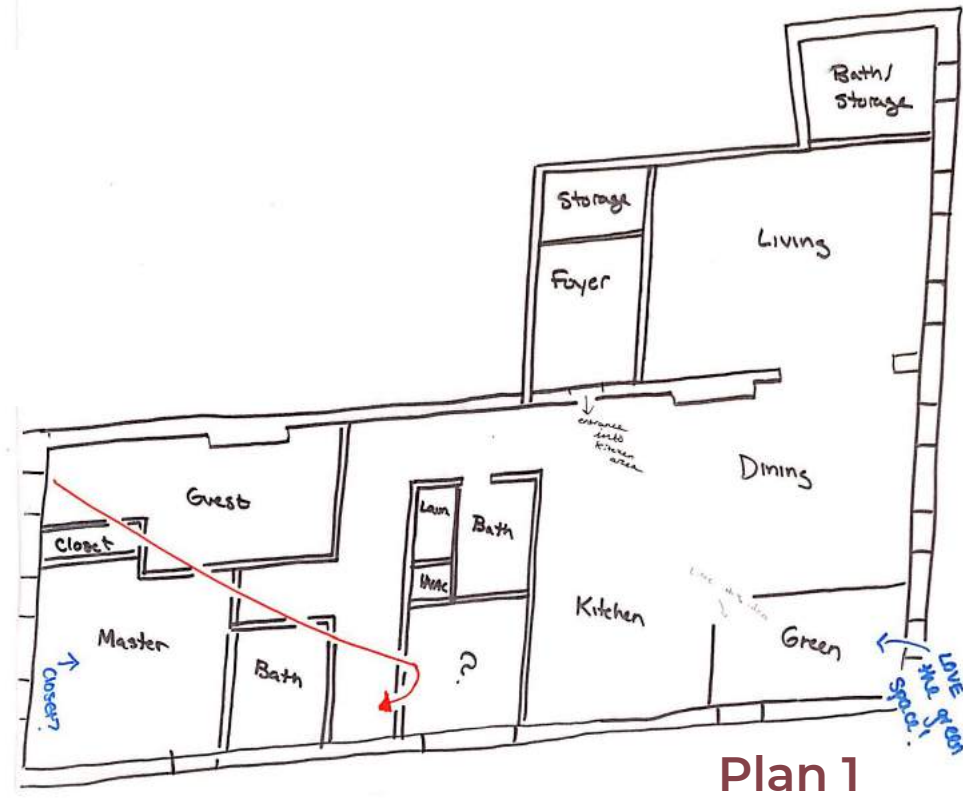
Plan 3

ADP
Mudroom
Entry
Library?

Block diagrams provide a more refined view of potential floor plan layouts.

Peer Feedback

Annotated Block Diagrams

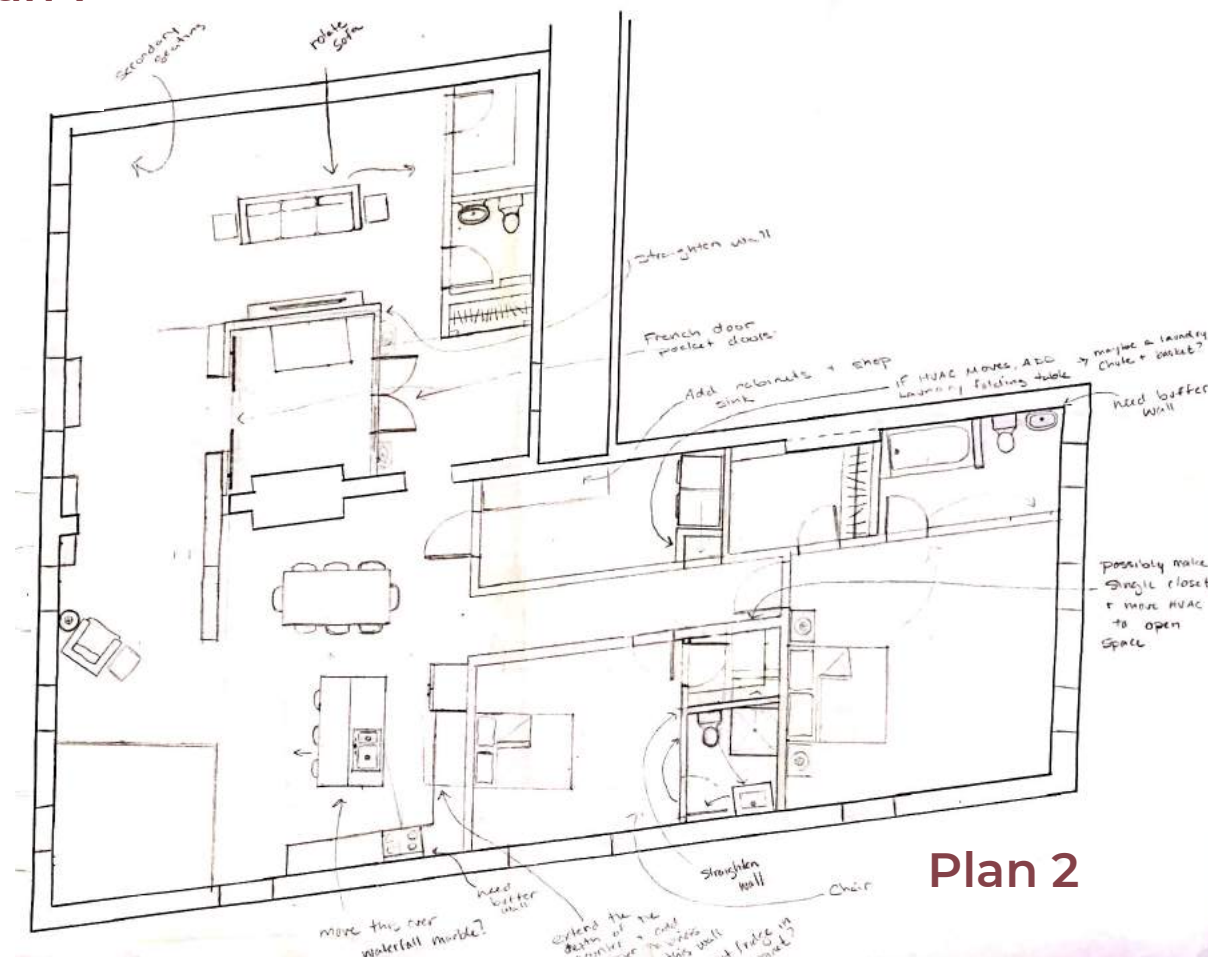


Receiving peer feedback is always a beneficial part of the design process. many of the concepts suggested in these notes informed the presentation of the final design.

Refined Floor Plans



Plan 1



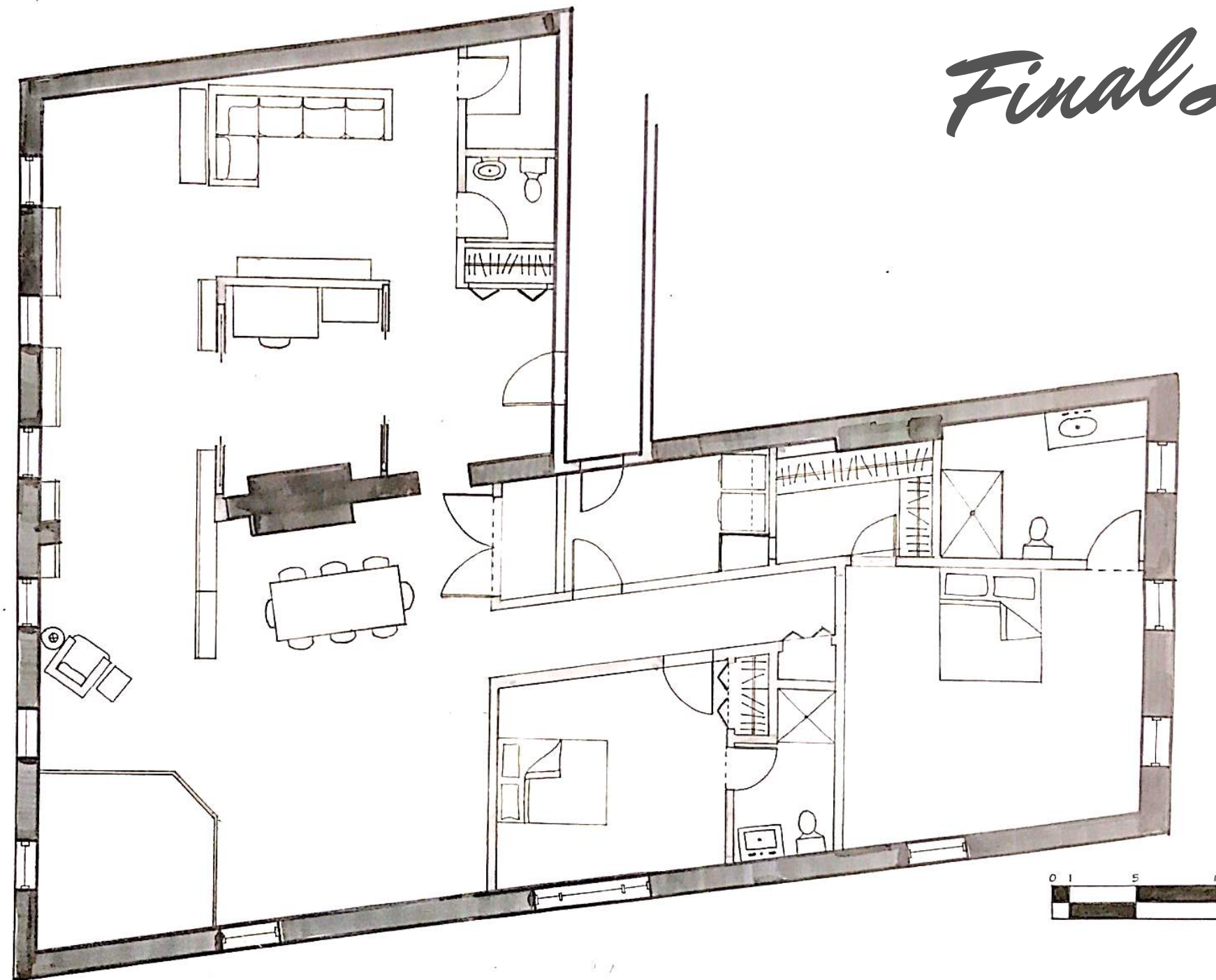
Plan 2

Only two of the block diagrams moved on to the next stage. Plan 1 had the benefit of more South-facing windows, but the restricted layout of the East wing created a disjointed floor plan layout. After filling both with furniture, it became clear that Plan 2 was the stronger option.

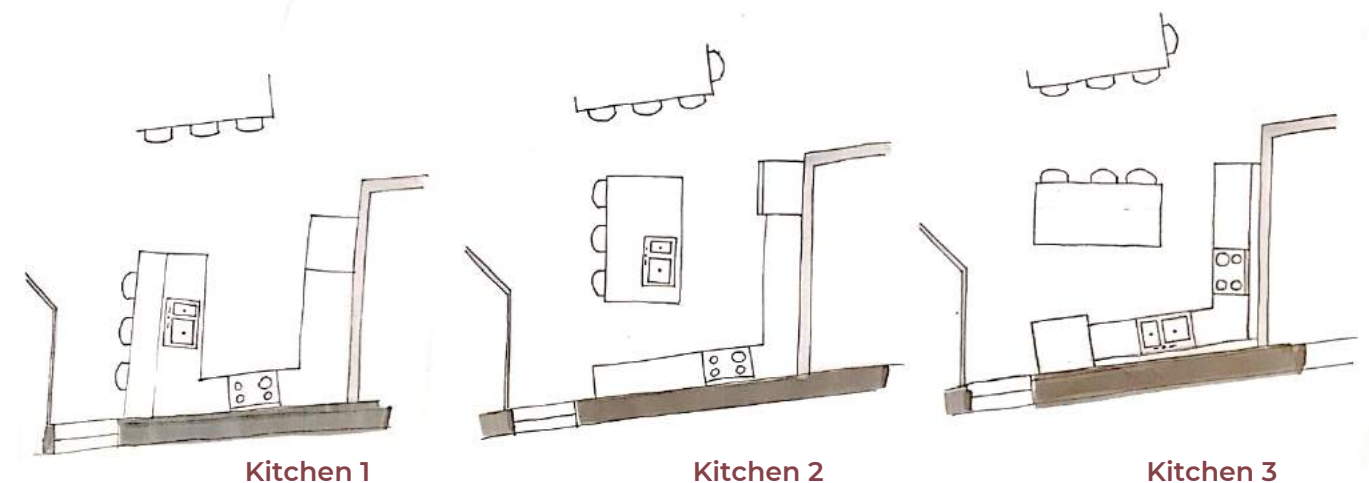
Final Layout of Plan 2

& Potential Kitchen Plan

Sadly, once Plan 2 was finalized with furniture and a kitchen layout, it was clear that this was still not the best design for the space or the client. The plan felt average, and the concept was not significantly represented in the overall structure of the home. Drafting new solutions for kitchen layout and rearranging furniture couldn't compensate for the fact that that plan lacked a certain spark.



One of the hardest aspects of creating the floor plan was selecting a kitchen layout. To ascertain which option was best, a series of three kitchen layouts were drafted.



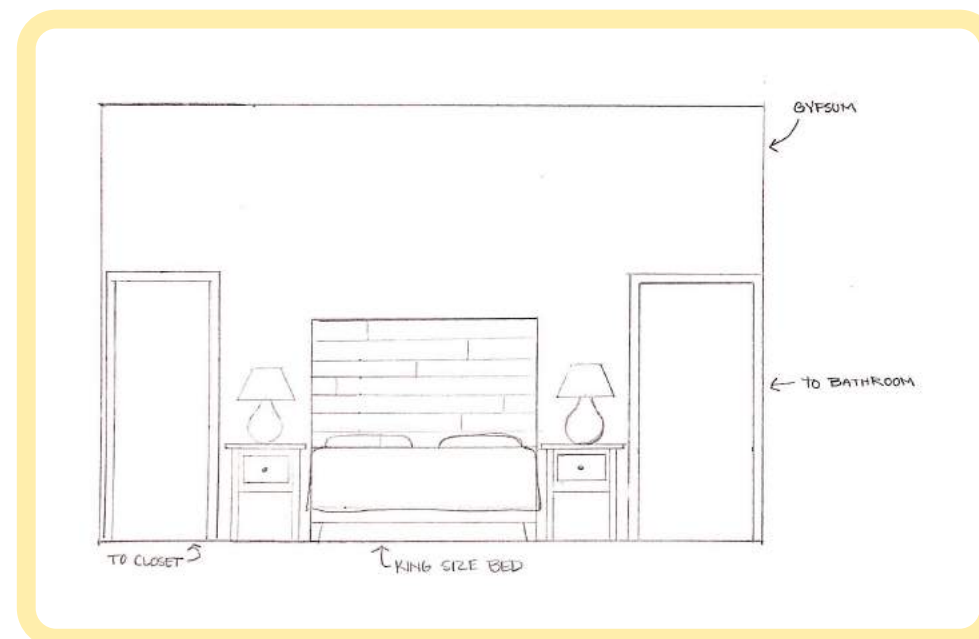
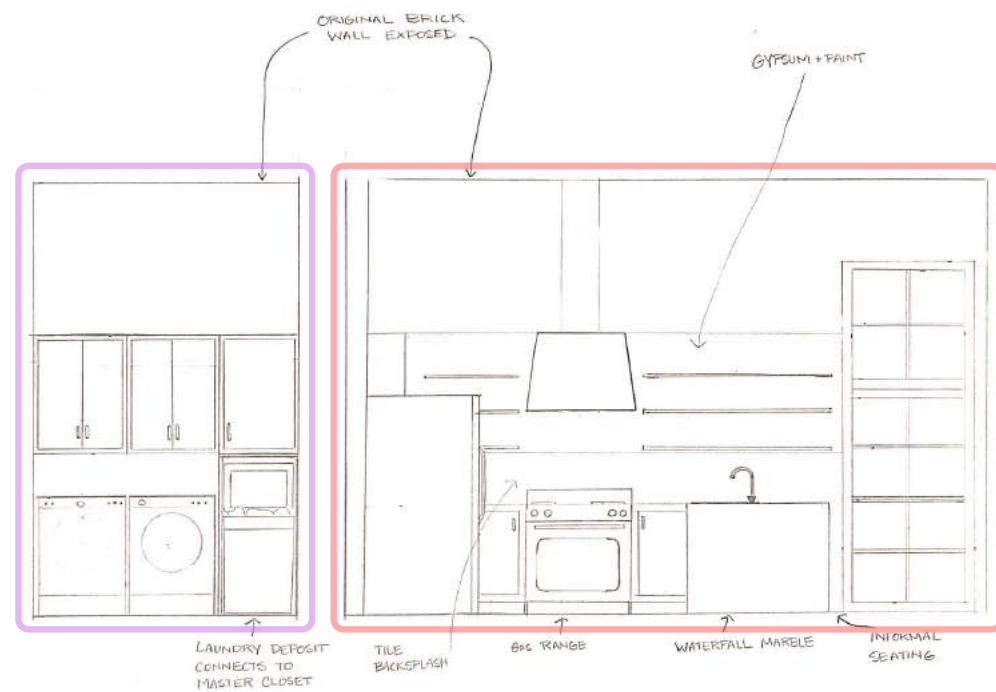
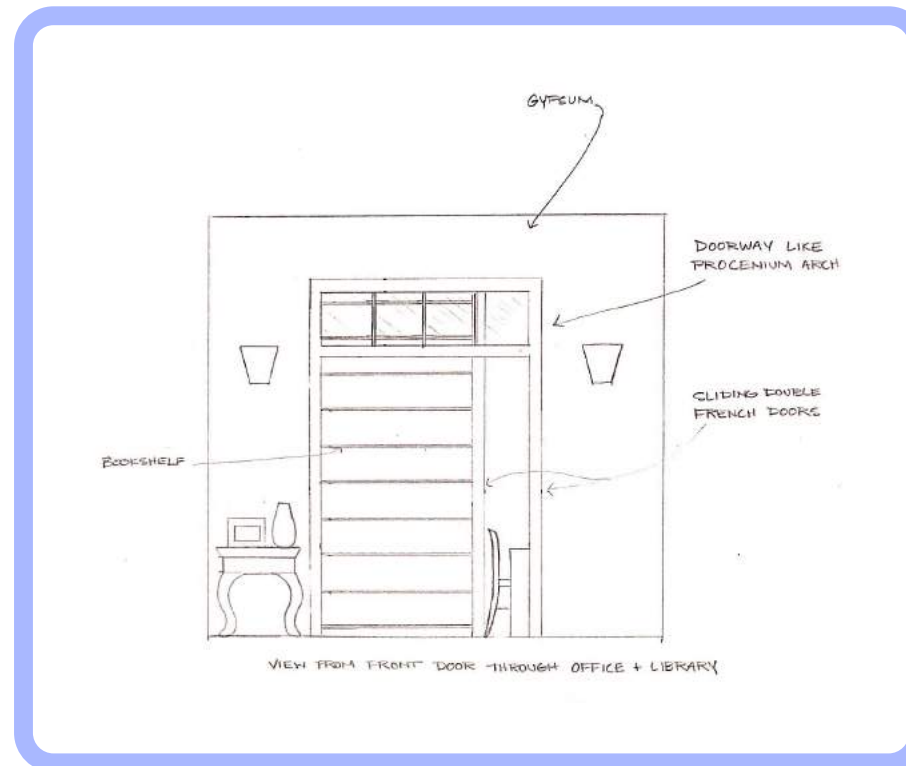
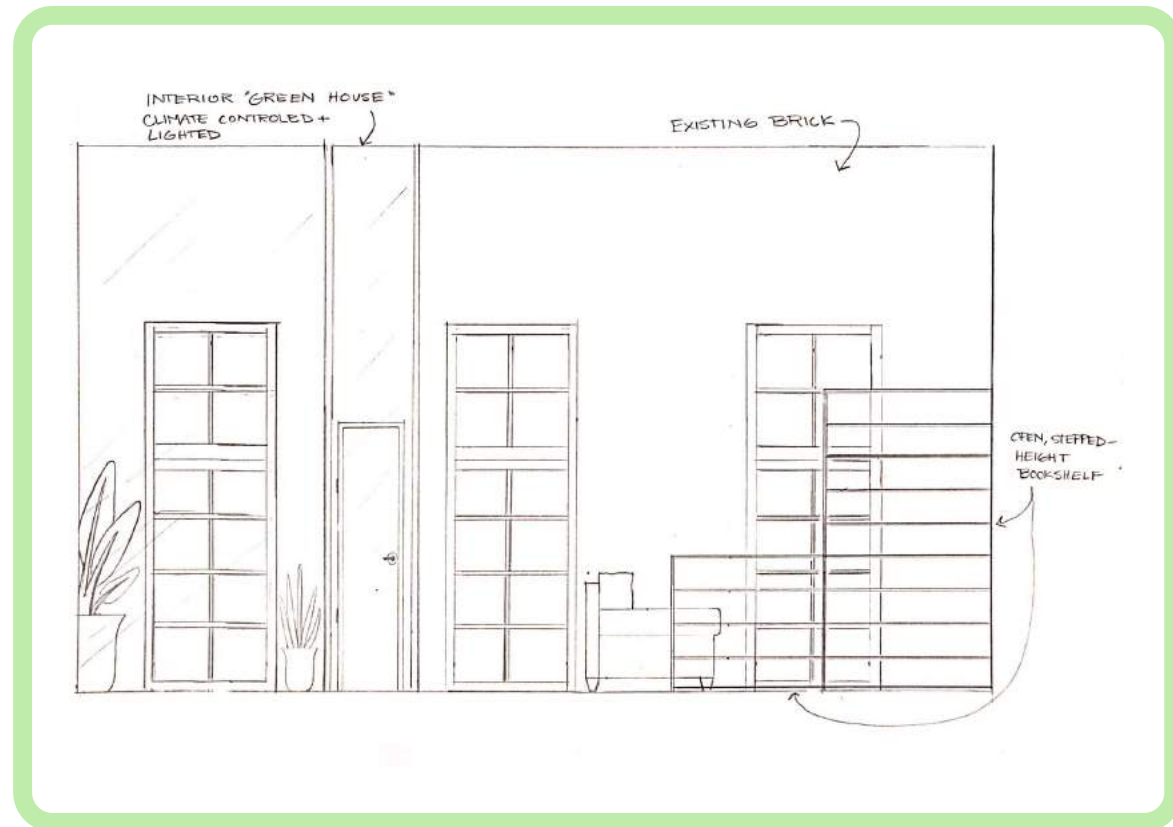
Kitchen 1

Kitchen 2

Kitchen 3

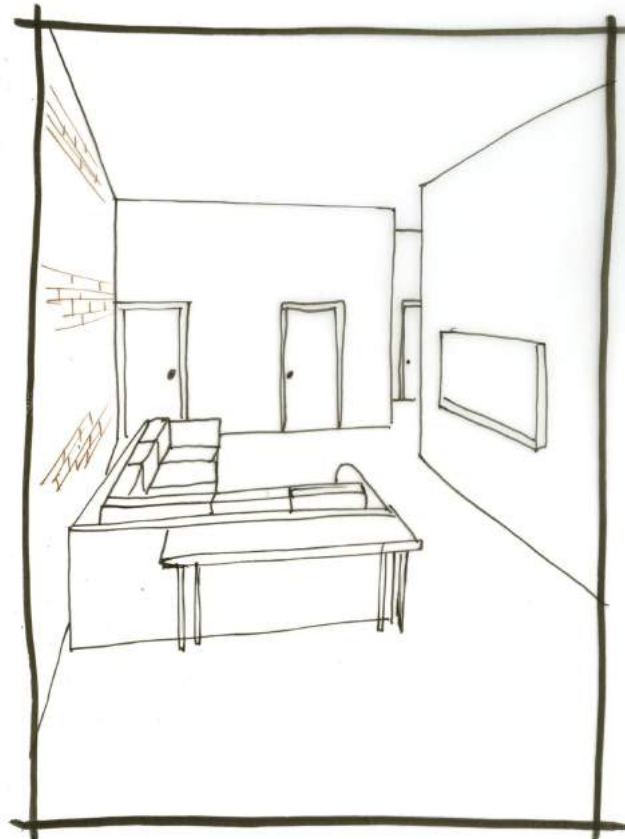
Key Elevations

A handful of spaces received more attention in the form of hand drafted elevations in an effort to find a solution for the space and better explain the spacial relationships of individual components or the details of specific elements.



Sketch Perspectives

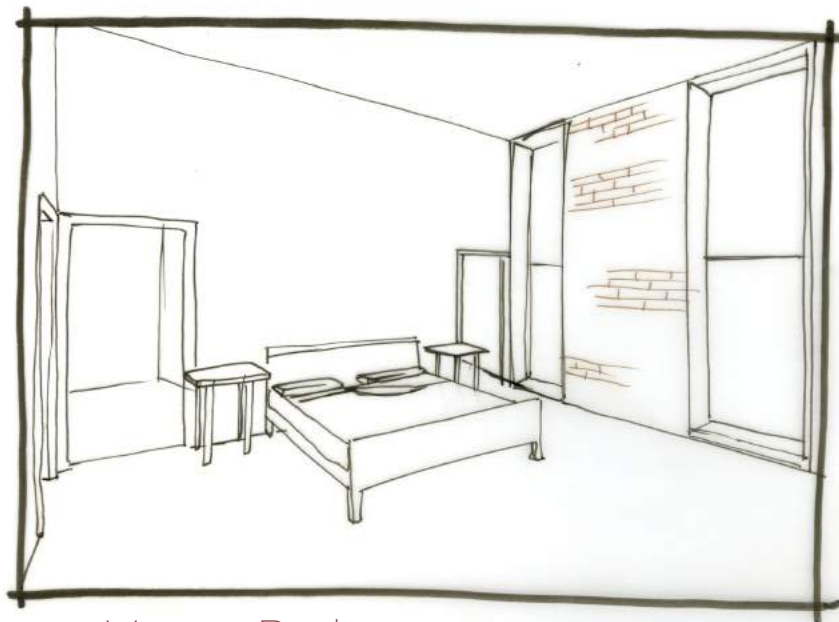
A selection of quick perspectives were also created to better understand the feel of the space. However, these only served to highlight major flaws in Plan 2. Angled walls and awkward placement lead to restrictive, narrow rooms in some areas and excessive wasted space in others. This was a perfectly adequate home, but no where near an elegant solution to the myriad of problems. It was time to return to the drawing board and begin drafting new layouts once again.



Living Room



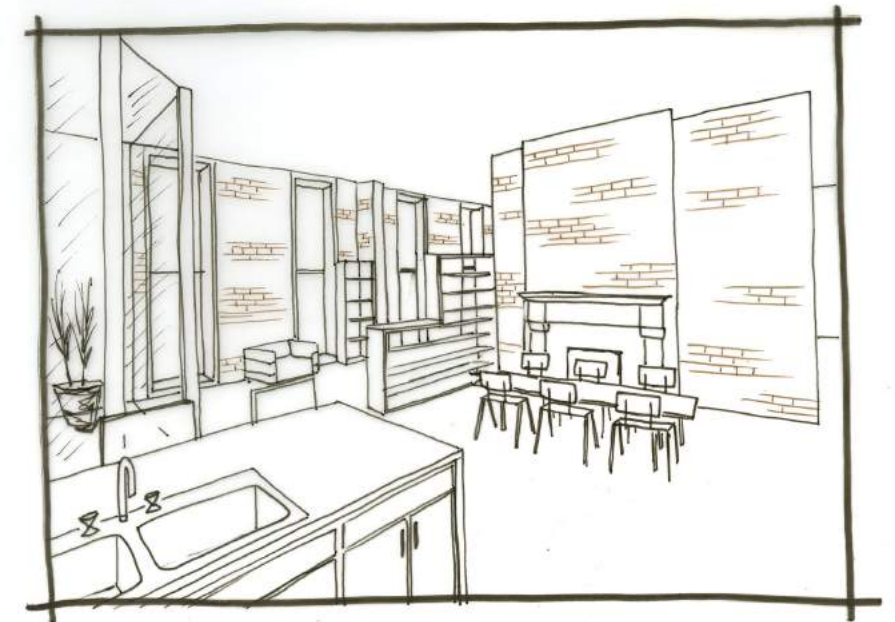
Kitchen



Master Bedroom



Library & Green Room



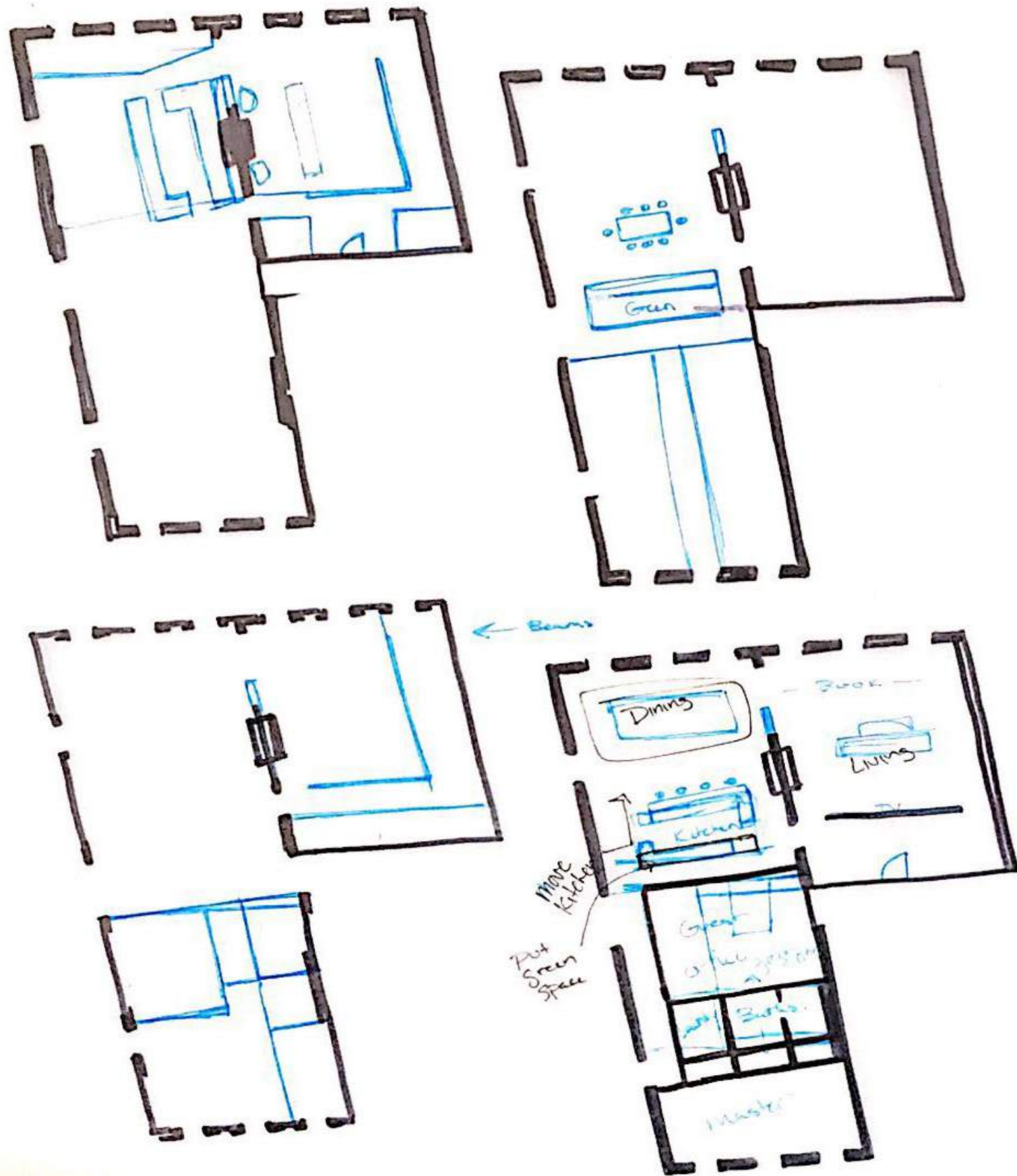
Dining Room & Green Room



*The Final
Floorplan*

A New Block Diagram

The new block diagrams were rougher, and more unfinished as ideas were drafted and dismissed before they were completed for one reason or another. The goal was to reinterpret and re-purpose ideas that were drafted for Plan 2 into a more streamlined and functional layout.



The Finalized Floor Plan



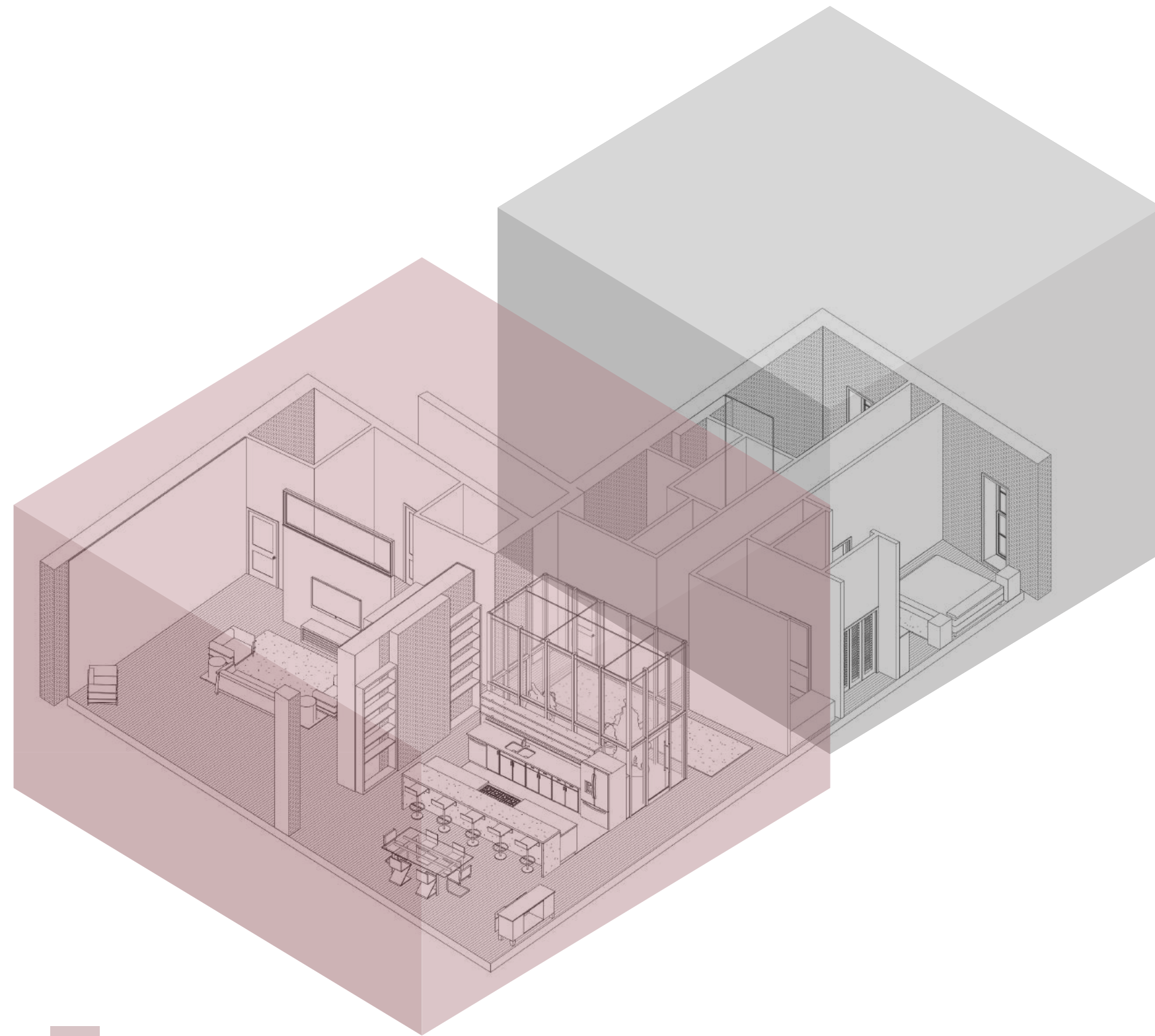
In the end, the office and guest bedroom were combined to maximize functional space, the foyer was centered to create a grand marquee, the living room was expanded and refocused to provide both a comfortable viewing layout for the television and a functional conversation space. Additionally, bedroom spaces were sized down and clustered in the south wing of the building to create a clear division between public and private spaces

The New Kitchen



Perhaps the most significant change in the new floor plan, however, was the redesign of the kitchen. Once the layout was reconfigured to create clean, 90 degree corners wherever possible, it was clear that there was only one kitchen layout that would really serve both the space and the concept. This design floated both the kitchen and the green space in the center of the northwest wing of the building like performers on a stage. A wide, galley kitchen butts up against the glass curtain wall, and bar seating provides a conversation space for guests. The layout creates a sense of privacy for the bedrooms without obstructing sight lines or access to natural light.

Behavioral Mapping



On Stage

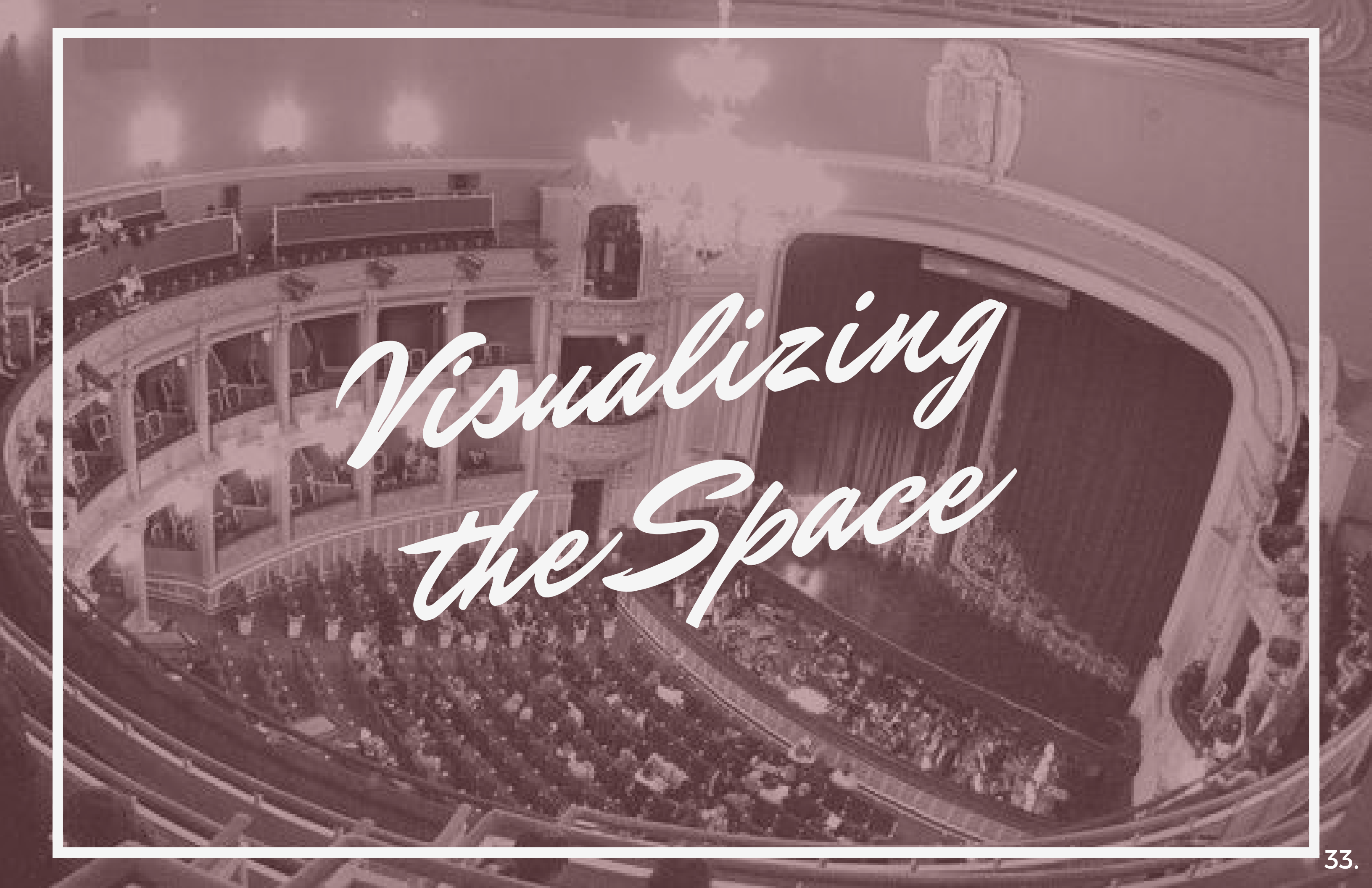
Back Stage

Our homes are often segmented presenting both a public narrative and a personal and private narrative rather in the way that a theater has a front of house or on-stage component and a backstage component. Celeste is not only a story teller, she is also a public persona. A large portion of her life plays out in the public eye and yet she works hard to keep her private life, and the lives of her immediate family members, private. Her home should work toward this goal as well.



The house has been carefully separated into "onstage" space and "backstage" space. As such, There is a pretty clear layout for guest spaces and private spaces as shown in this graphic. However, there are some guest spaces, such as the guest bathroom and bedroom, that fall within the backstage space. These are unique in that they would only be open to invited guests such as close friends and family, however, and are therefore still considered backstage space.

- Homeowner Use
- Guest Use (Invitation Only)
- Guest Use
- Pet Use

An aerial, high-angle photograph of a grand, circular theater. The theater features a large, curved stage with a dark, possibly curtained, backdrop. The seating is arranged in multiple tiers, creating a semi-circular bowl shape. The architecture is highly detailed and ornate, with decorative elements visible on the walls and ceiling. The entire image is rendered in a monochromatic, sepia-toned style. The text "Visualizing the Space" is overlaid in a white, cursive font across the center of the image.

*Visualizing
the Space*

Interior

Perspective



The most important space to convey in a perspective was the kitchen. Not only is this the traditional heart of the home, but it is also designed to be the actual stage, and therefore it is the heart in the theater concept. It is the last line between on-stage and backstage, around which all other areas are designed. Thus is the focus of the rendered perspective.

Key Elevations

Many of the spaces did not lend themselves to perspective drawings. Instead, a series of elevations were created to show exactly how those spaces interacted with the user and furthered the concept. For example, this elevation shows the drama of the all-black kitchen with gold accents, which was deliberately selected for its theatricality.



The foyer "marquee" acts as a greeting upon first entering the home. This wallpapered gallery wall contains family photos instead of production posters, but still acts as a "coming attractions" wall. It highlights the family influences that lead to the concept of the space and which will come into play as one moves into the rest of the home.



Key Elevations

The kitchen is placed directly in front of the green room not only to allow for shared plumbing for both the sink and the faucet in the green room, but also to provide an interesting backdrop for the "stage."



The backstage spaces were deliberately designed to be small and understated. Much like backstage spaces in a theater, these rooms contain rougher finishes and more understated furnishings.





*Applying the
Concept*

The Concept in Finishes



In the back stage bathrooms, green room, and half bath, the rich marble tile has been replaced with rough, matte black limestone. The finishes backstage are not as opulent as those in the onstage spaces just as they would be in a real theater.



A particularly lux marble and brass patterned tile was selected for the floor of the kitchen. This echos the rich embellishment often found in the house seating spaces in theaters, but where the decoration in theaters is typically on the ceiling, in this space, it has transitioned to the floor.

Dark walnut paneling visually separates onstage and backstage spaces and disguises doorways to provide a sense of privacy. Additionally, a small toe kick along the walls is under lit with LED strips to mimic theater emergency lighting.



The Concept in Furniture

Dining Room

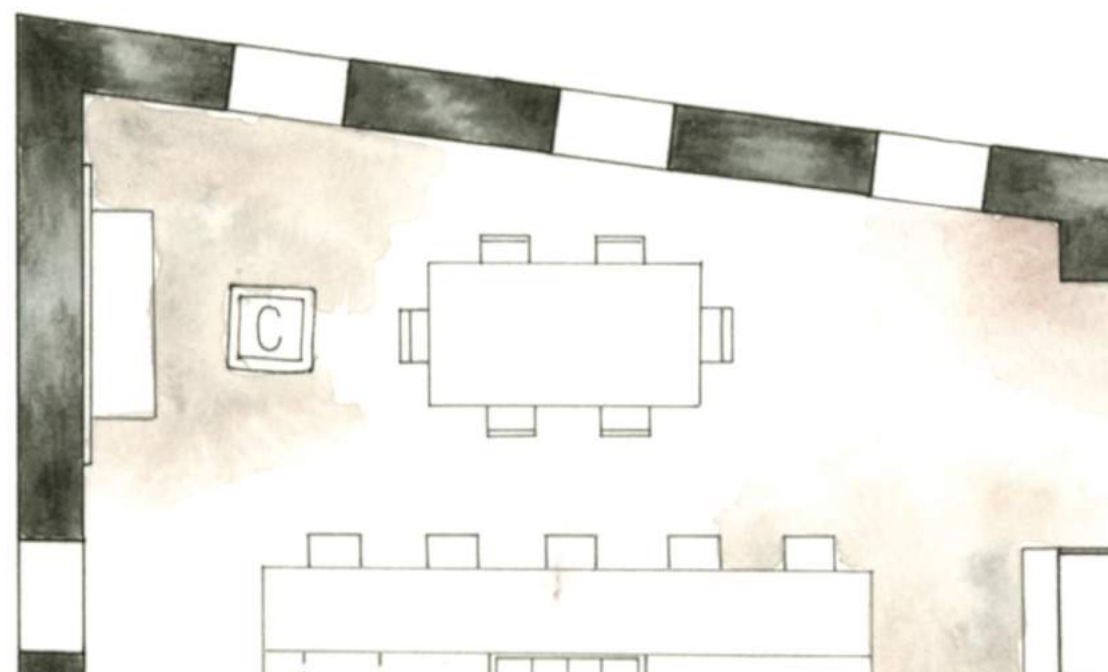


The chandelier selection is a call back to the antique theater footlights. These old lighting systems usually used a bare bulb or a candle to light the actors feet with only a thin screen or shell-like structure to block the light from the audience. This modern light fixture seemed like an obvious choice therefore.



The dining chairs were selected to echo the house seating in an antique theater space. Often these rooms are decorated with excessive amounts of gold leaf, and so four of the dining chairs are gold.

Seating provided for guests in these theaters were also often red velvet folding chairs with a solid, sturdy back that acted as a support structure. The design for the red chair, used at both ends of the table, echoed the design of old theater seating.



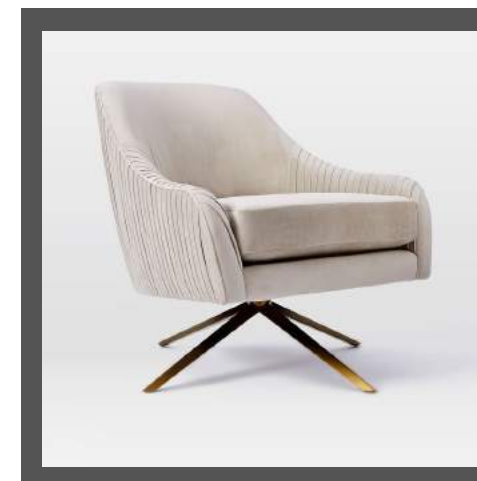


The living room coffee table also functions as a full height table for meals or work. In the theater many of the set pieces must be able to transform to serve multiple scenes. This table carried on that theatrical tradition.

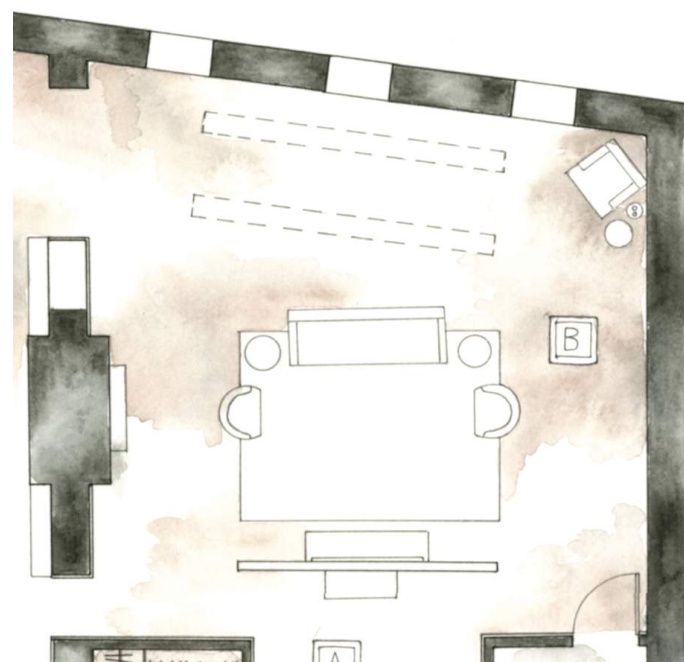
The Concept *in Furniture* Living Room



This image serves as an example of the bespoke open library shelving system designed for the living room. This system is suspended on cables affixed to a fly system so that it can be lowered into the living room space for perusal or raised into the rafters to provide a more open floor plan. This is perhaps the most direct theater inspired design piece.



This white velvet chair was selected because the pleating along the arms and back referenced a theater curtain. It also had the added advantage of being a swivel chair, which would allow for both television viewing and conversation with ease.



The peacock table is a nod both to the theatrical nature of peacocks, and to Celeste's quirky sense of humor. Although it may seem out of place, when used in the space it will provide an extra bit of interest and hopefully spark conversation.

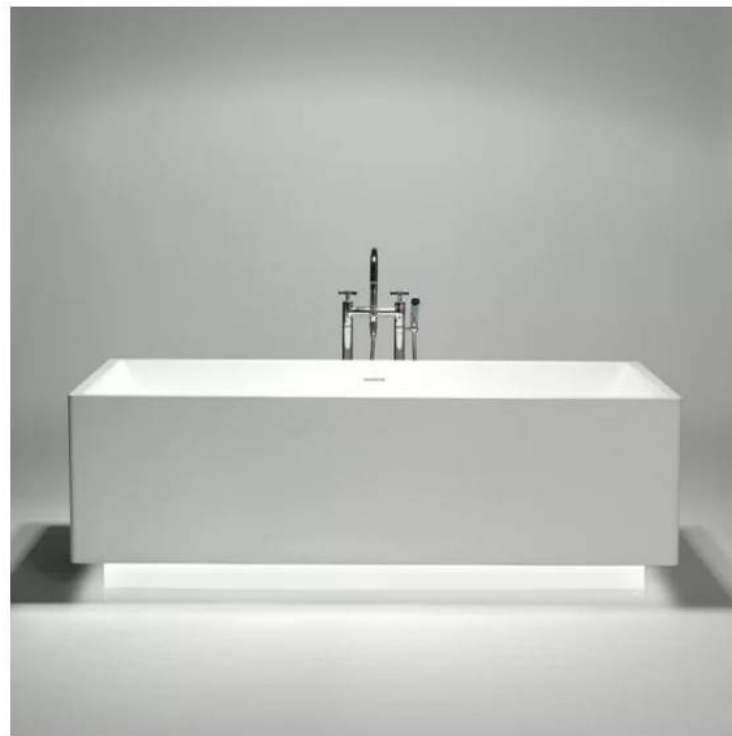
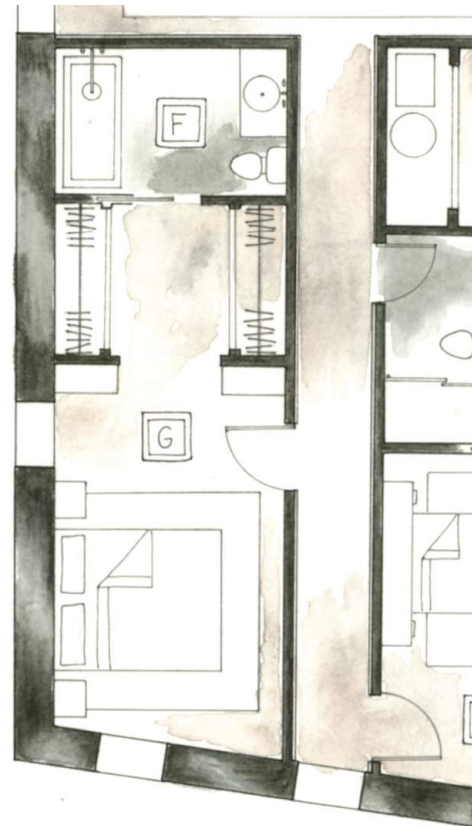


The Concept in Furniture

Master Bed and Bath



The entire home is lit by these small, industrial style track lights, which are hidden between the beams in the rafters. With their boxy shape and barn doors, they perfectly reflect theater lighting. Hiding them in the beams allows for even more of a stage feel.



Like the walnut paneling, the bathtub in the master bathroom also has a toe kick space that is under lit by LED strip lighting. This once again echoes the emergency house lights that often line walkways in theaters.

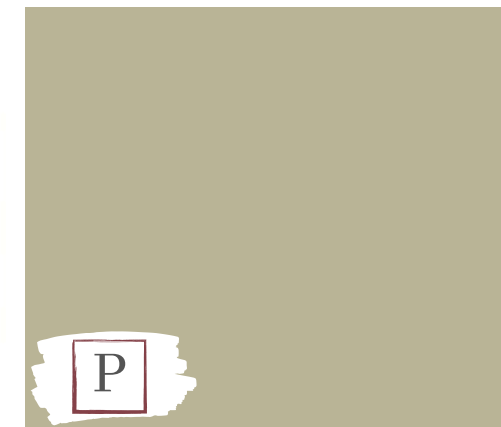
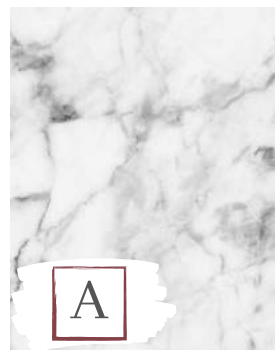


This bedside table and its matching dresser were chosen because the bedroom furniture is in a backstage space. These pieces echo the black kitchen cabinets, but have a rougher and less refined texture.



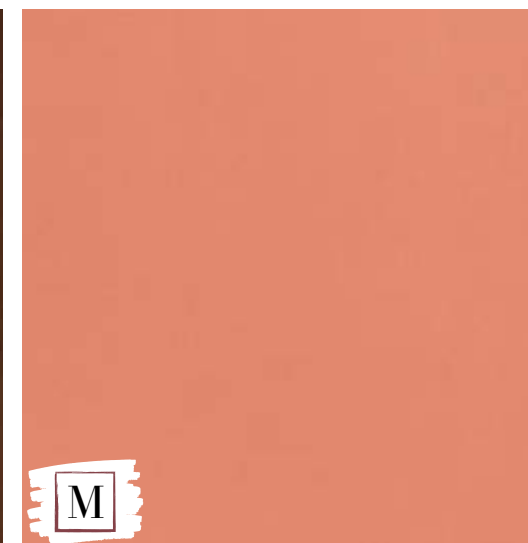
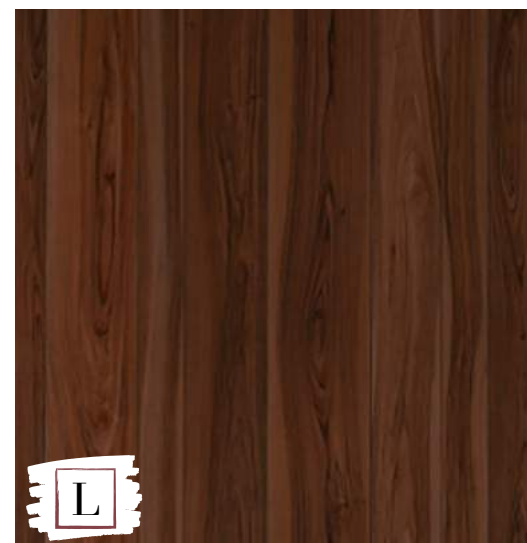
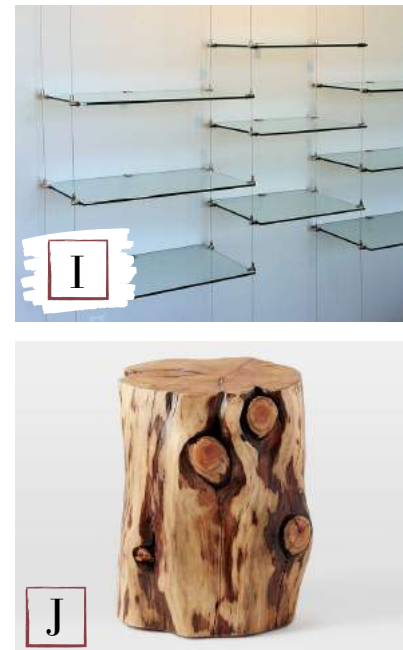
*Finishes +
Furnishings*

Kitchen and Dining Room



	<i>Product Name</i>	<i>Source</i>	<i>Overall Dimensions</i>	<i>Material</i>	<i>Cost</i>
A	White Georgia Marble Countertop	Polycor	Custom	White Georgia Marble	Custom
B	Manor Walnut Plywood Paneling	Mantel Craft	4'W,8"H,1/4"D	Walnut Plywood	\$70/Sheet
C	Statuario & Gold Marble Mosaic Tile	Floor and Decor	12"W, 12"L	Marble and Brass	\$24.99/spft
D	"Incarnadine" Paint	farrow and Ball	N/A	Paint	\$110/Gallon
E	Dual Zone Wine Cooler	Avallon	15"W, 34"H, 24"D	Metal	\$929
F	Cattelan Italia Spyder Wood Table	Charish	40"W, 79"D, 30"H	Walnut and Metal	\$3500
G	Brucie 1-Light Globe Pendant	AllModern	19"W, 16"H,16"D, Adjustable Length	Glass, Metal	\$125.99
H	Voltage Track Lighting	Perigold	6"L	Metal	\$75
I	St. Martin Upholstered Dining Chair	Perigold	37"H, 21"W, 24"D	Alder Wood, Velvet	\$1023
J	Single Handle Spray Kitchen Faucet	Moen	17"H, 2.25"W	Metal with Brushed Gold Finish	\$588.90
K	Hyperion Bar Stool	Sterling Industries	34"H, 16"L, 16"W	Acrylic and Metal	\$219.60
L	Bosch French Door Refridgerator	Bosch	35.75"W, 70"H, 28.75"D	Metal	\$2784.10
M	Osiris Medium Reflector Chandelier	Circa Lighting	32"H, 33"W, Custom Length	Metal	\$2769
N	Odetta Buffet	Anthropologie	32"H, 66.25"W, 19"D	Engineered Hardwood	\$2498
O	Double Basin Granite Composite Sink	Elkay	9.5"H, 19"W, 33"L	Granite Composite	\$325.89
P	"Ball Green" Paint	Farrow and Ball	N/A	Paint	\$110/Gallon
Q	Oro Gold Dining Chair	CB2	30"H, 17.5"W, 19"D	Polished Aluminum with Gold Finish	\$279
R	White Oil Stained Heart Pine	Original Feature	N/A	Heart Pine Flooring	Custom
S	Plainfield Shaker Cabinets	Omega Cabinetry	Custom	Cherry Wood, Black Finish	Custom

Living Room



	<i>Product Name</i>	<i>Source</i>	<i>Overall Dimensions</i>	<i>Material</i>	<i>Cost</i>
A	Davidson Leather Sofa	COCOCO Home	37"H, 80"L, 36"D	Leather, Wood Frame	\$2,925.72
B	Wooden Pendant Lamp	Hangout Lighting	Custom	Wood, Fabric Cord	\$85
C	Pavo Side Table	Anthropologie	23"H, 24.5"W, 20"D	Brass, Glass, Iron	\$398
D	Roar + Rabbit™ Swivel Chair	West Elm	31.5"W, 32.5"D, 29.5"H	Performance Velvet Metal Legs	\$640
E	Minimalist Fin Marble Side Table	Charish	18"W, 18"D, 20"H	Carrara Marble	Leather
F	White Oil Stained Heart Pine	Original Feature	N/A	Heart Pine Flooring	Custom
G	Varia Ecoresin: Electra Gold	3form	Custom	Resin, Metal	Custom
H	Bower LED Floor Lamp	West Elm	9.75"diam. 65"H	Metal, Glass, Cloth Cord	\$399
I	Suspended Bookshelf	Custom	Custom	Glass, Wire	Custom
J	Natural Tree Stump Side Table	Anthropologie	Approx. 12"-15"diam. 19"H	Solid Cypress Wood	\$299
K	Deco Bowen Chair	Anthropologie	31"H, 32"W, 35"D	Fabric, Lucite, Wood Frame	\$838.60
L	Manor Walnut Plywood Paneling	Mantel Craft	4'W, 8"H, 1/4"D	Walnut Plywood	\$70/Sheet
M	Sherwin Williams "Sockeye" Paint	Sherwin Williams	N/A	Latex Paint	Custom
N	Dove Light Charcoal Area Rug	Exquisite Rugs	9'W, 12'L	Wool	\$2,946
O	Mid-Century Pop-Up Storage Coffee Table	West Elm	48"W x 24"D x 17.4"H	Walnut, Marble	\$699
P	Rosanna Ceravolo Media Console	West Elm	68.25"w, 16.4"D, 20"H	Engineered Wood	\$1,399

Foyer



A



E



B



C



D



F

Green Room



G



H

Guest Bathrooms



I



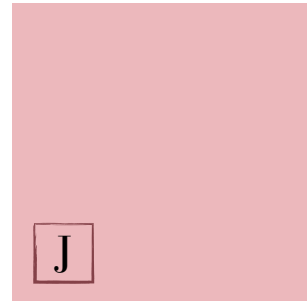
J

	<i>Product Name</i>	<i>Source</i>	<i>Overall Dimensions</i>	<i>Material</i>	<i>Cost</i>
A	Rangoli Wallpaper	Innovations	50"W, 28 yd	Vinyl and Metal Film	Custom
B	Manor Walnut Plywood Paneling	Mantel Craft	4'W,8"H,1/4"D	Walnut Plywood	\$70/Sheet
C	White Oil Stained Heart Pine	Original Feature	N/A	Heart Pine Flooring	Custom
D	Oscarine Lucite Mirrored Console Table	Anthropologie	30"H, 40"W, 16"D	Lucite, tempered glass, brushed brass accents	\$598
E	Piper Sconce	Anthropologie	10.75"H, 5"W	Iridescent milk glass brushed brass	\$148
F	Black Brushed Limestone Tile	Floor and Decor	12"W,24"L	Limestone	\$2.79/sqft
G	Voltage Track Lighting	Perigold	6"L	Metal	\$75
H	Black Brushed Limestone Tile	Floor and Decor	12"W24"L	Limestone	\$2.79/sqft
I	Laureat on Gabriell	Kohler	28"H,18.5"W,28"L	Porcelain	\$6313.80
J	Ambrosia Oval Wood Wall Mirror	Wayfair	33"H, 25"W, 1"D	Wood	\$122.73

Master Bed



Master Bath



	<i>Product Name</i>	<i>Source</i>	<i>Overall Dimensions</i>	<i>Material</i>	<i>Cost</i>
A	Gallery-Wrapped Canvas Detroit Industry, Diego Rivera	Amazon	60"W, 24"H	Artist-grade Canvas Archival Ink	\$229.99
B	Alexa Burnished Dresser	West Elm	33.5"W, 15.75"D, 50.3"H	Solid acacia wood with a Burnished finish	\$1399
C	Hand-Tufted Sunflower/Gold Area Rug	Wayfair	7'6"W, 9'6"L	Wool	\$369.99
D	Sloane Floating Upholstered Platform Bed	Perigold	48"H, 78"W, 88.75"L	Solid Wood	\$3844.26
E	Alexa Burnished Nightstand	West Elm	20"W, 16"D, 28"H	Solid acacia wood with a Burnished finish	\$449
F	Pillar Table Lamp + USB	West Elm	16.5"diam. 24.5"H	Marble and Brass	\$249
G	Satin Glass Sliding Door	Bertolotto Porte	3'W, 7'L	Frosted Glass	Custom
H	"Pink Ground" Paint	Farrow and Ball	N/A	Paint	\$110/Gallon
I	Brucie 1-Light Globe Pendant	AllModern	19"W, 16"H, 16"D, Adjustable Length	Glass, Metal	\$125.99
J	"Pink Ground" Paint	Farrow and Ball	N/A	Paint	\$110/Gallon
K	Tampleton Carrara Marble Console Sink	Wayfair	30"L, 22"W, 38"H	Brass and Marble	\$849.99
L	Black Brushed Limestone Tile	Floor and Decor	12"W, 24"L	Limestone	\$2.79/sqft
M	Laureat on Gabriell	Kohler	28"H, 18.5"W, 28"L	Porcelain	\$6313.80
N	Freestanding Soaking Bathtub	Perigold	71"L, 31.5"W, 23.5"H	Porcelain and LED Lights	\$8492
O	Sable Black Polished Marble Tile	Floor and Decor	4"H, 12"L	Marble	\$2.99/piece
P	Baywood Exposed Pipe Shower	Signature Hardware	4 7/8" diam. Shower Head	Brass	\$379.95

A black and white photograph of a theater stage. The stage is framed by an ornate, arched architectural structure with intricate carvings and a decorative railing. The stage itself is covered with dark, heavy curtains. The text "The End" is written in a large, white, cursive font across the center of the stage. The overall scene is dimly lit, emphasizing the architectural details and the central text.

The End